



DONE RIGHT.®

2015 workwear catalog

DONE



RIGHT.®



MORE THAN JUST A SLOGAN. IT'S A WAY OF LIFE.



Here's to the early risers. The heavy lifters. The people who believe there's only one way a job should be done – and that's DONE RIGHT. We've been outfitting these hard workers since 1923 in everything from shirts, pants and overalls to lab coats and butcher wraps.

TODAY, WE OUTFIT MORE THAN 16 MILLION WORKERS, AND WE'RE JUST GETTING STARTED.

So, here's to the people who do the tough jobs. The challenging jobs. The messy jobs. The bending, twisting jobs. The jobs that make you think on your feet. And yes, they can be the fun jobs – at least for those of us who take great pride in our work and pride in the people we work alongside. We make Red Kap for all of you. And we'll continue, for as long as there are people who never quit, who go to work before the sun comes up and head home for dinner long after the sun's gone down.



ICON GUIDE

Use the below legend as a guide to help quickly identify unique features and benefits for Red Kap® garments after each product name.



WOMEN'S COMPANION PIECE AVAILABLE

Garments on pages 12-61 featuring this icon have a female companion piece located in the Women's Workwear section on pages 86-97.



TOUCHTEX™ TECHNOLOGY

Superior color retention, soil release and wickability.



TOUCHTEX PRO™

Same features as Touchtex but with an even softer hand. Available on bottoms only.



YARN DYED STRIPES

Yarns are dyed then woven into a striped configuration.



DURABLE PRESS

Minimum pressing or ironing required. Fabric contains a wrinkle-resistant finish.



NO BUTTONS

This garment has no buttons that will fall off or catch.



UV BUTTONS

Non-yellowing buttons for long-lasting whiteness through industrial laundry processing.



HYDROPHYLIC MOISTURE MANAGEMENT SYSTEM

Technical term meaning moisture wicking. Wicks perspiration away from the skin and spreads it over the fabric face. It then quickly evaporates, allowing the wearer to stay cool, dry and comfortable.



ROKAP

A Red Kap® term for our no-roll waistband. This garment has enhanced engineering to withstand industrial laundry stress and abrasion. The waistband has a mesh inner lining inside to reduce breakdown in fabric fibers, giving the pant a permanent crease even after industrial laundering.



WORK NMOTION® FABRIC

Created exclusively for Red Kap® and provides permanent comfort during wear with memory stretch yarns for added flexibility.



NO-SCRATCH APPAREL

Paint jobs stay scratch free thanks to strategically-designed garment features that keep buttons and snaps under wraps.



STRETCH CANVAS

The industry's first Industrial Stretch Canvas is extra tough but wears comfortably all day long.



TRUBLACK

Our 65% Polyester / 35% Cotton Black fabric resists fading wash after wash.



CLASSIC FIT

This fit features a traditional rise that sits at the natural waist. Slim through the seat and thigh with a slimmer leg opening that will fit over work boots.



RELAXED FIT

Our relaxed fit jeans feature a traditional rise that sits at the natural waist. Relaxed seat and thigh offer more room for mobility, and the slightly tapered leg fits over work boots.



LOOSE FIT

This fit features an updated rise that sits slightly below the waist. It is cut through the seat and thigh to offer maximum comfort and ease of movement. The straight leg fits over work boots.



DUNGAREE FIT

Our dungarees feature a loose fit with an updated rise that sits slightly below the natural waist. They are full cut through seat and thigh for maximum comfort and ease of movement. Straight leg fits over work boots.



STRAIGHT FIT

Our Women's Straight Fit features an updated rise that sits slightly below the waist. It is slim through the seat and thigh with a leg opening that fits over work boots.



HI-VISIBILITY CLASS 2 LEVEL 2

Intended for use in activities where greater visibility is necessary during inclement weather conditions or in work environments with risks that exceed those for Class 1. These garments also cover workers who perform tasks that divert their attention from approaching traffic or that put them in close proximity to passing vehicles traveling at 25 mph or higher.



HI-VISIBILITY CLASS 3 LEVEL 2

Provides the highest level of visibility and are intended for workers who face serious hazards, such as nighttime work, and often have high task loads that divert attention away from approaching vehicle traffic. Garments for these workers provide enhanced visibility to more of the body, such as arms and legs.



HI-VISIBILITY CLASS E LEVEL 2

Waistband trousers, bib overalls and shorts that meet all minimum requirements for retro-reflective and background materials, except for minimum area and placement required for Performance Class 3, 2 or 1. Class E apparel is not intended to be worn without Performance Class 2 or 3 apparel. When Class E trousers are worn with Performance Class 2 or Class 3 apparel, the overall classification for the ensemble is Performance Class 3.



UPF 40 RATING

Ultraviolet Protection Factor - A rating designed for fabric and clothing that specifically measures the level of sun protection. UPF measures both UVA and UVB rays.

FIT CHART ICONS



MEN'S FIT CHART (MFC)

The "M" represents "Men's" and is followed by the corresponding number of the specific Men's Fit Chart on pgs. 185-188.



WOMEN'S FIT CHART (LFC)

The "L" represents "Ladies" and is followed by the corresponding number of the specific Women's Fit Chart on pg. 184.

WASH CODES



INDUSTRIAL LAUNDRY



LIGHT SOIL WASH



HOME WASH



DRY CLEAN

CONTENTS

Icon Guide	4-5
Red Kap Product Features & Benefits	6-7
Customization	8-9
Shirts	10-39
Pants	40-61
Outerwear	62-71
Coverings	72-75
Coveralls	76-83
Women's	84-97
Automotive	98-111
Hi-Visibility	112-121
Enhanced Visibility	122-131
Housekeeping	132-143
Healthcare	144-149
Food Processing	150-157
Culinary	158-177
Services	178-181
Measuring Guidelines	182-183
Size Charts	184-188
Legal	189
Index / Size Chart Reference	190-191



ICON GUIDE BOOKMARK

Use the handy bookmark included in the catalog to easily identify icons used for each product.





PRODUCT FEATURES

It's more than just hard-working workwear. Our Red Kap® workwear collection is designed for the work you do everyday. Stronger seams. More durable fabrics. Pockets in just the right places. With so many features that help you get the job done, our workwear definitely has what it takes.

SewStrong

Bartacks with angled stitching take the strain to prevent rips.

Hex Pocket

Corner-free pockets resist dirt and lint buildup. Added bartacks provide extra strength to prevent rips.



CREW SHIRT - SY20BR
shown on page 16 and 100

SmartPlacket

Buttons stay neatly hidden for a smooth look. Plackets also allow for custom embroidery application.

Versa Hem

A straight bottom hem offers a versatile fit with maximum comfort and style. Whether it's a tucked in or tucked out kind of day.



TOUCHTEX™ TECHNOLOGY
SUPERIOR WICKABILITY

Red Kap's advanced Touchtex™ fabric actually pulls moisture away from the body, helping it to evaporate more quickly.

TESTED RIGHT. DONE RIGHT.



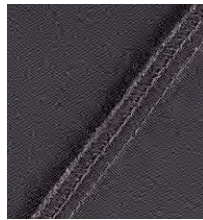
Every Red Kap garment must pass rigorous testing for proof of excellence in design, engineering and construction. That's the Done Right guarantee.



RoKap
No-roll waistband is designed to lie flat and hold its shape.



Triple Grip System
Brass ratcheting zipper securely locks in place while strategically placed bartacks provide extra strength.



DuraSeams
Double-stitched seams provide maximum strength and durability.

DURA-KAP® INDUSTRIAL PANT - PT20BK shown on page 42

FABRIC THAT WORKS (FOR YOU)

We offer a wide variety of high-quality, durable fabrics made to withstand the wear and tear endured on any jobsite. Whether you're looking for added comfort, durability or a little bit of both, we've got the fabric that suits your needs. And it's Red Kap, so you know it's Done Right.

65% POLYESTER / 35% COTTON 80% POLYESTER / 20% COTTON

- Poly-rich fibers deter dust and debris
- Breathability and comfort of cotton
- Strength and durability of polyester
- Lightweight for comfort
- Provides excellent color retention

100% COTTON

- All natural fibers offer breathability
- Twill weave adds strength
- Easy care, wrinkle-resistant finish
- Lightweight for comfort
- Soft hand and easy drape on the body

100% SPUN POLYESTER

- Strong fibers that stand up to wear and tear
- Fibers have more "give" than natural fibers, offering more comfort and mobility
- Provides excellent color retention
- Processes faster through all wash cycles
- Fibers deter dust and debris

ANTI-STAT

- Low lint fabric
- Lightweight fabric with roomier fit for added comfort on the job
- Grippers at sleeves and at neck for extra coverage when needed
- External chest and hip pockets for additional storage

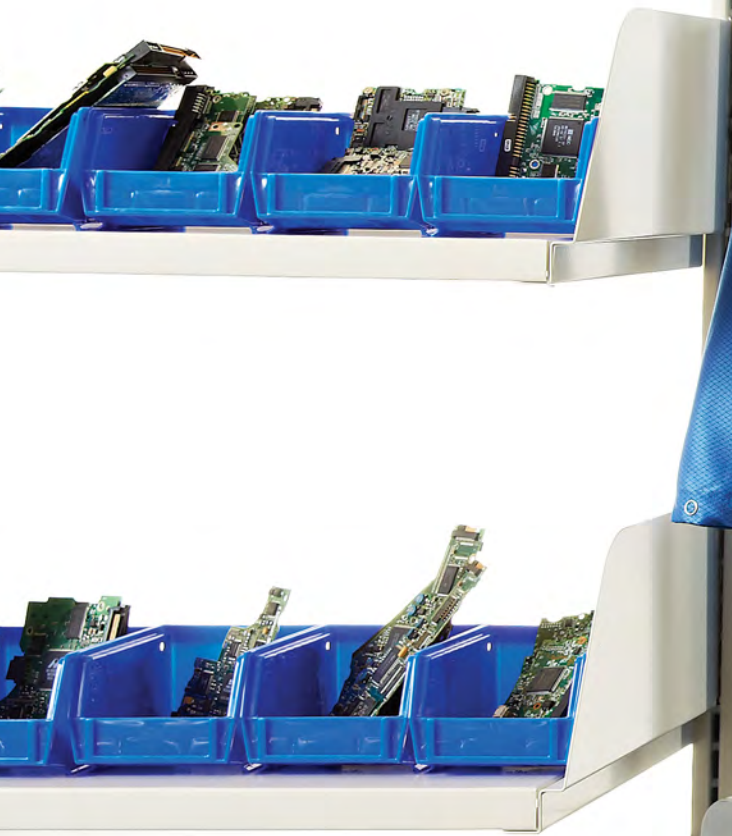
WORK NMOTION®

- Memory Stretch yarns for added flexibility
- Inherent stretch adds additional comfort
- Excellent stretch recovery at stress points (elbows and knees)
- Bartacks at all stretch points for added durability





coverings







KT30NV



SHOP COAT (IL) (LS) (HW) M12

Five concealed grippers ◦ One-piece, notched lapel ◦ Two chest pockets and two lower pockets ◦ Two-pieced sleeve ◦ Shaped center back seam ◦ Side vent openings and back vent ◦ 43 1/2" length (based on size 42)

7.25 oz. Twill, 65% Polyester / 35% Cotton
Country of Origin: Imported

KT30 (Reg) 36-58

COLOR: CH, NV, PB



BL electronic blue

WH white



KK28WH



ESD / ANTI-STATIC TECH COAT

LS HW M27

Six-gripper front ◦ One-piece, notched lapel ◦ Left chest pocket and two lower pockets ◦ Adjustable gripper sleeves with grounding snap at cuff ◦ 41 1/2" length (based on size medium) ◦ Special care required ◦

MEETS ESD STM 2.1-1997 TEST METHODOLOGY

4 oz. Warp Knit, 94% Texturized Polyester / 6% Carbon Suffused Nylon
Country of Origin: Imported

KK28 (Reg) S-3XL

COLOR: BL, WH



BL electronic blue



WH white

KK26BL



ESD / ANTI-STATIC COUNTER JACKET

LS HW M27

Five-gripper front ◦ One-piece, notched lapel ◦ Adjustable gripper sleeves with grounding snaps ◦ Left chest pocket, two lower pockets ◦ 33" length (based on size medium) ◦ Special care required ◦ **MEETS ESD STM 2.1-1997 TEST METHODOLOGY**

4 oz. Warp Knit, 94% Polyester / 6% Carbon Suffused Nylon
Country of Origin: Imported

KK26 (Reg) S-3XL

COLOR: BL, WH

CK44NV



ESD / ANTI-STATIC COVERALL

LS HW M24

Sized to be worn over clothes ◦ Military-style collar with gripper at neck ◦ Action back ◦ Two set-in front pockets, chest pockets and patch hip pockets ◦ Rule pocket on leg ◦ Special care required ◦

MEETS ESD STM 2.1-1997 TEST METHODOLOGY

4 oz. Warp Knit, 94% Texturized Polyester / 6% Carbon Suffused Nylon
Country of Origin: Imported

CK44 (Short) M-L
(Reg) S-3XL
(Long) M-2XL

COLOR: NV



NV navy

