



DONE RIGHT.®

2015 workwear catalog

DONE



RIGHT.®



MORE THAN JUST A SLOGAN. IT'S A WAY OF LIFE.



Here's to the early risers. The heavy lifters. The people who believe there's only one way a job should be done – and that's **DONE RIGHT**. We've been outfitting these hard workers since 1923 in everything from shirts, pants and overalls to lab coats and butcher wraps.

TODAY, WE OUTFIT MORE THAN 16 MILLION WORKERS, AND WE'RE JUST GETTING STARTED.

So, here's to the people who do the tough jobs. The challenging jobs. The messy jobs. The bending, twisting jobs. The jobs that make you think on your feet. And yes, they can be the fun jobs – at least for those of us who take great pride in our work and pride in the people we work alongside. We make Red Kap for all of you. And we'll continue, for as long as there are people who never quit, who go to work before the sun comes up and head home for dinner long after the sun's gone down.



ICON GUIDE

Use the below legend as a guide to help quickly identify unique features and benefits for Red Kap® garments after each product name.



WOMEN'S COMPANION PIECE AVAILABLE

Garments on pages 12-61 featuring this icon have a female companion piece located in the Women's Workwear section on pages 86-97.



TOUCHTEX™ TECHNOLOGY

Superior color retention, soil release and wickability.



TOUCHTEX PRO™

Same features as Touchtex but with an even softer hand. Available on bottoms only.



YARN DYED STRIPES

Yarns are dyed then woven into a striped configuration.



DURABLE PRESS

Minimum pressing or ironing required. Fabric contains a wrinkle-resistant finish.



NO BUTTONS

This garment has no buttons that will fall off or catch.



UV BUTTONS

Non-yellowing buttons for long-lasting whiteness through industrial laundry processing.



HYDROPHYLIC MOISTURE MANAGEMENT SYSTEM

Technical term meaning moisture wicking. Wicks perspiration away from the skin and spreads it over the fabric face. It then quickly evaporates, allowing the wearer to stay cool, dry and comfortable.



ROKAP

A Red Kap® term for our no-roll waistband. This garment has enhanced engineering to withstand industrial laundry stress and abrasion. The waistband has a mesh inner lining inside to reduce breakdown in fabric fibers, giving the pant a permanent crease even after industrial laundering.



WORK NMOTION® FABRIC

Created exclusively for Red Kap® and provides permanent comfort during wear with memory stretch yarns for added flexibility.



NO-SCRATCH APPAREL

Paint jobs stay scratch free thanks to strategically-designed garment features that keep buttons and snaps under wraps.



STRETCH CANVAS

The industry's first Industrial Stretch Canvas is extra tough but wears comfortably all day long.



TRUBLACK

Our 65% Polyester / 35% Cotton Black fabric resists fading wash after wash.



CLASSIC FIT

This fit features a traditional rise that sits at the natural waist. Slim through the seat and thigh with a slimmer leg opening that will fit over work boots.



RELAXED FIT

Our relaxed fit jeans feature a traditional rise that sits at the natural waist. Relaxed seat and thigh offer more room for mobility, and the slightly tapered leg fits over work boots.



LOOSE FIT

This fit features an updated rise that sits slightly below the waist. It is cut through the seat and thigh to offer maximum comfort and ease of movement. The straight leg fits over work boots.



DUNGAREE FIT

Our dungarees feature a loose fit with an updated rise that sits slightly below the natural waist. They are full cut through seat and thigh for maximum comfort and ease of movement. Straight leg fits over work boots.



STRAIGHT FIT

Our Women's Straight Fit features an updated rise that sits slightly below the waist. It is slim through the seat and thigh with a leg opening that fits over work boots.



HI-VISIBILITY CLASS 2 LEVEL 2

Intended for use in activities where greater visibility is necessary during inclement weather conditions or in work environments with risks that exceed those for Class 1. These garments also cover workers who perform tasks that divert their attention from approaching traffic or that put them in close proximity to passing vehicles traveling at 25 mph or higher.



HI-VISIBILITY CLASS 3 LEVEL 2

Provides the highest level of visibility and are intended for workers who face serious hazards, such as nighttime work, and often have high task loads that divert attention away from approaching vehicle traffic. Garments for these workers provide enhanced visibility to more of the body, such as arms and legs.



HI-VISIBILITY CLASS E LEVEL 2

Waistband trousers, bib overalls and shorts that meet all minimum requirements for retro-reflective and background materials, except for minimum area and placement required for Performance Class 3, 2 or 1. Class E apparel is not intended to be worn without Performance Class 2 or 3 apparel. When Class E trousers are worn with Performance Class 2 or Class 3 apparel, the overall classification for the ensemble is Performance Class 3.



UPF 40 RATING

Ultraviolet Protection Factor - A rating designed for fabric and clothing that specifically measures the level of sun protection. UPF measures both UVA and UVB rays.

FIT CHART ICONS



MEN'S FIT CHART (MFC)

The "M" represents "Men's" and is followed by the corresponding number of the specific Men's Fit Chart on pgs. 185-188.



WOMEN'S FIT CHART (LFC)

The "L" represents "Ladies" and is followed by the corresponding number of the specific Women's Fit Chart on pg. 184.

WASH CODES



INDUSTRIAL LAUNDRY



LIGHT SOIL WASH



HOME WASH



DRY CLEAN

CONTENTS

Icon Guide	4-5
Red Kap Product Features & Benefits	6-7
Customization	8-9
Shirts	10-39
Pants	40-61
Outerwear	62-71
Coverings	72-75
Coveralls	76-83
Women's	84-97
Automotive	98-111
Hi-Visibility	112-121
Enhanced Visibility	122-131
Housekeeping	132-143
Healthcare	144-149
Food Processing	150-157
Culinary	158-177
Services	178-181
Measuring Guidelines	182-183
Size Charts	184-188
Legal	189
Index / Size Chart Reference	190-191



ICON GUIDE BOOKMARK

Use the handy bookmark included in the catalog to easily identify icons used for each product.





PRODUCT FEATURES

It's more than just hard-working workwear. Our Red Kap® workwear collection is designed for the work you do everyday. Stronger seams. More durable fabrics. Pockets in just the right places. With so many features that help you get the job done, our workwear definitely has what it takes.

SewStrong

Bartacks with angled stitching take the strain to prevent rips.

Hex Pocket

Corner-free pockets resist dirt and lint buildup. Added bartacks provide extra strength to prevent rips.



CREW SHIRT - SY20BR
shown on page 16 and 100

SmartPlacket

Buttons stay neatly hidden for a smooth look. Plackets also allow for custom embroidery application.

Versa Hem

A straight bottom hem offers a versatile fit with maximum comfort and style. Whether it's a tucked in or tucked out kind of day.



TOUCHTEX™ TECHNOLOGY
SUPERIOR WICKABILITY

Red Kap's advanced Touchtex™ fabric actually pulls moisture away from the body, helping it to evaporate more quickly.

TESTED RIGHT. DONE RIGHT.



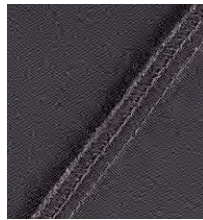
Every Red Kap garment must pass rigorous testing for proof of excellence in design, engineering and construction. That's the Done Right guarantee.



RoKap
No-roll waistband is designed to lie flat and hold its shape.



Triple Grip System
Brass ratcheting zipper securely locks in place while strategically placed bartacks provide extra strength.



DuraSeams
Double-stitched seams provide maximum strength and durability.

DURA-KAP® INDUSTRIAL PANT - PT20BK shown on page 42

FABRIC THAT WORKS (FOR YOU)

We offer a wide variety of high-quality, durable fabrics made to withstand the wear and tear endured on any jobsite. Whether you're looking for added comfort, durability or a little bit of both, we've got the fabric that suits your needs. And it's Red Kap, so you know it's Done Right.

65% POLYESTER / 35% COTTON 80% POLYESTER / 20% COTTON

- Poly-rich fibers deter dust and debris
- Breathability and comfort of cotton
- Strength and durability of polyester
- Lightweight for comfort
- Provides excellent color retention

100% COTTON

- All natural fibers offer breathability
- Twill weave adds strength
- Easy care, wrinkle-resistant finish
- Lightweight for comfort
- Soft hand and easy drape on the body

100% SPUN POLYESTER

- Strong fibers that stand up to wear and tear
- Fibers have more "give" than natural fibers, offering more comfort and mobility
- Provides excellent color retention
- Processes faster through all wash cycles
- Fibers deter dust and debris

ANTI-STAT

- Low lint fabric
- Lightweight fabric with roomier fit for added comfort on the job
- Grippers at sleeves and at neck for extra coverage when needed
- External chest and hip pockets for additional storage

WORK NMOTION®

- Memory Stretch yarns for added flexibility
- Inherent stretch adds additional comfort
- Excellent stretch recovery at stress points (elbows and knees)
- Bartacks at all stretch points for added durability







food
processing





KT50WH

FULL CUT BUTCHER COAT

IL LS HW M 12

Six large dome snap closures ◦ Interior chest pocket ◦ Two oversized exterior pockets ◦ Side and back vent openings ◦ Full cut to wear over heavy clothes ◦ 45 ¼" back length on size medium

65% Polyester / 35% Cotton Twill
Country of Origin: Imported

KT50 (Reg) S-3XL

COLOR: WH



WH white



KS58WH

SNAP-FRONT BUTCHER COAT

IL LS HW M 12

Six large dome snap closures ◦ Interior left chest pocket ◦ Two oversized lower exterior pockets ◦ Side vent openings ◦ 45" back length on size medium

100% Spun Polyester Plain Weave
Country of Origin: Imported

KS58 (Reg) XS-5XL

COLOR: WH



WH white



KT18WH



GRIPPER-FRONT BUTCHER COAT



Traditional fit with six-gripper front closure ◦ Interior left chest pocket ◦ Exterior lower pockets ◦ Side vent openings ◦ 41 ½" back length on size medium

65% Polyester / 35% Cotton Twill
Country of Origin: Imported

KT18 (Reg) S-3XL

COLOR: WH



WH white

4004WH



GRIPPER-FRONT BUTCHER COAT



One-piece collar with notched lapel ◦ Six-gripper front closure ◦ Side vent openings ◦ 4004 and KS64 have one interior chest pocket and two exterior lower pockets ◦ 4016 and KS62 have one exterior chest pocket and two exterior lower pockets ◦ 4006 has no pockets ◦ 44 ¾" back length on size medium

65% Polyester / 35% Cotton Twill
Country of Origin: Imported

4004 (Reg) S-4XL

4006 (Reg) S-4XL

4016 (Reg) S-4XL

COLOR: WH

100% Spun Polyester
Country of Origin: Imported

KS64 (Reg) XS-5XL

KS62 (Reg) XS-5XL

COLOR: WH



WH white

0416WH



GRIPPER-FRONT SHORT BUTCHER COAT



One-piece collar with notched lapel ◦ 0406 has a five-gripper front, one exterior chest pocket and two lower exterior pockets ◦ 0416 has a four-gripper front and no pockets ◦ 30 ¾" back length on size medium

65% Polyester / 35% Cotton Twill
Country of Origin: Imported

0406 (Reg) S-4XL

0416 (Reg) S-4XL

COLOR: WH



WH white





DONE RIGHT.



LB light blue
with navy cuffs

NV navy
with navy cuffs

TN tan
with white cuffs

WH white
with white cuffs



KS60WH



GRIPPER-FRONT POCKETLESS BUTCHER COAT WITH KNIT CUFFS

IL LS HW ~~XL~~ M 12

One-piece, lined collar with notched lapel ◦ Six-gripper front ◦ Two-piece sleeve for better fit ◦ Knit cuff ◦ No pockets ◦ No side vents ◦ 44 3/4" back length based on size medium

100% Spun Polyester Plain Weave
Country of Origin: Imported

KS60 (Reg) S-5XL

COLOR: LB, NV, TN, WH



LB light blue
with navy cuffs

NV navy
with navy cuffs

TN tan
with white cuffs

WH white
with white cuffs

CUSTOMIZATION ◦ White - logo embroidery on left upper front



WP10WH



COLLARLESS BUTCHER WRAP (IL) (LS) (HW) (X) (L 01)

Three-quarter sleeves • Reversible self-tie closure • WP18 has no pockets • WP10 has interior left chest pocket and two exterior lower pockets • 37" back length on size medium

80% Polyester / 20% Combed Cotton Poplin
Country of Origin: Imported

WP18 (Reg) S-4XL* (*Sizes vary by color)

COLOR: LB, NV, WH

WP10 (Reg) S-4XL* (*Sizes vary by color)

COLOR: LB, NV, RB, RD, WH





WT50WH

BUTCHER WRAP

One exterior chest pocket ◦ WS50 and WT50 have two exterior lower pockets ◦ WS40 has interior left chest pocket and two interior lower pockets ◦ Reversible self-tie closure ◦ Side vent openings ◦ 44 1/2" back length on size medium

100% Polyester Plain Weave ◦ Country of Origin: Imported

WS40 (Reg) XS-5XL

COLOR: **WH**

100% Spun Polyester Plain Weave ◦ Country of Origin: Imported

WS50 (Reg) XS-5XL

COLOR: **WH**

65% Polyester / 35% Cotton Twill ◦ Country of Origin: Imported

WT50 (Reg) M-3XL

COLOR: **WH**



WH white



Reference page 9 to see a customized option of WT50WH.



SS16WH

SPECIALIZED POLYESTER WORK SHIRT

Touchtex™ technology with superior color retention, soil release and wickability ◦ Two-piece convertible collar with sewn-in stays and stainless steel gripper closure ◦ Seven-gripper front on SS26 and SS16 ◦ SS24 has six-button front and gripper at neck ◦ 32 1/2" back length on size medium (33 3/4" on longs)

100% Spun Polyester Poplin ◦ Country of Origin: Imported

SS26 **SHORT SLEEVE, NO POCKET** (Reg) S-4XL*, (Long) L-4XL

COLOR: **MB, WH**

SS16 **LONG SLEEVE, NO POCKET** (Reg) S-4XL, (Long) L-3XL

COLOR: **WH**

* Sizes vary by color



MB medium blue



WH white



SP16LT

SPECIALIZED POCKETLESS WORK SHIRT

Touchtex™ technology with superior color retention, soil release and wickability ◦ Two-piece convertible collar with sewn-in stays ◦ Seven stainless steel gripper closures ◦ 32 1/2" back length on size medium ◦ Women's companion (SP15 / SP25) shown on page 157

65% Polyester / 35% Cotton Poplin

Country of Origin: Imported

SP26 **SHORT SLEEVE** (Reg) S-6XL*, (Long) L-4XL* (*Sizes vary by color)

SP16 **LONG SLEEVE** (Reg) S-5XL*, (Long) M-4XL* (*Sizes vary by color)

COLOR: **LA, LB, LT, NV, WH**



LA light grey



LB light blue



LT light tan



NV navy



WH white



SP15WH

WOMEN'S SPECIALIZED POCKETLESS WORK SHIRT (IL) (LS) (HW) (M) (L01)

Touchtex™ technology with superior color retention, soil release and wickability ◦ Two-piece convertible collar with sewn-in stays ◦ Six stainless steel gripper closures ◦ Squared bottom to wear tucked in or out ◦ 27" back length on size medium ◦ Men's companion (SP16 / SP26) on page 156

65% Polyester / 35% Cotton Poplin
Country of Origin: Imported

SP25 **SHORT SLEEVE** (Reg) S-4XL*

COLOR: **LB, WH**

SP15 **LONG SLEEVE** (Reg) S-4XL

COLOR: **WH**

* Sizes vary by color



LB light blue



WH white



PS56WH

SPECIALIZED WORK PANT



Touchtex™ technology with superior color retention, soil release and wickability ◦ Hook-and-eye closure ◦ Slack-style front pockets and set-in hip pockets ◦ No buttons on garment

65% Polyester / 35% Cotton Twill
Country of Origin: Imported

PT56 30-42

COLOR: **WH**

100% Spun Polyester
Country of Origin: Imported

PS56 30-44

COLOR: **WH**



WH white



SC16LB

SPECIALIZED COTTON WORK SHIRT (IL) (LS) (HW) (M) (46)

Two-piece, lined collar with sewn-in stays ◦ Pocketless ◦ Seven stainless steel gripper closures ◦ Separate two piece back yoke ◦ 32 1/2" back length on size medium (33 3/4" on longs)

100% Cotton Twill
Country of Origin: Imported

SC16 **LONG SLEEVE**
(Reg) S-3XL, (Long) L-2XL

COLOR: **LB, NV, WH**



LB light blue



NV navy



WH white

