



**DONE RIGHT.®**

---

2015 workwear catalog



# DONE





# RIGHT.®



MORE THAN JUST A SLOGAN. IT'S A WAY OF LIFE.



Here's to the early risers. The heavy lifters. The people who believe there's only one way a job should be done – and that's DONE RIGHT. We've been outfitting these hard workers since 1923 in everything from shirts, pants and overalls to lab coats and butcher wraps.

---

TODAY, WE OUTFIT MORE THAN 16 MILLION WORKERS, AND WE'RE JUST GETTING STARTED.

---

So, here's to the people who do the tough jobs. The challenging jobs. The messy jobs. The bending, twisting jobs. The jobs that make you think on your feet. And yes, they can be the fun jobs – at least for those of us who take great pride in our work and pride in the people we work alongside. We make Red Kap for all of you. And we'll continue, for as long as there are people who never quit, who go to work before the sun comes up and head home for dinner long after the sun's gone down.



## ICON GUIDE

Use the below legend as a guide to help quickly identify unique features and benefits for Red Kap® garments after each product name.



### WOMEN'S COMPANION PIECE AVAILABLE

Garments on pages 12-61 featuring this icon have a female companion piece located in the Women's Workwear section on pages 86-97.



### TOUCHTEX™ TECHNOLOGY

Superior color retention, soil release and wickability.



### TOUCHTEX PRO™

Same features as Touchtex but with an even softer hand. Available on bottoms only.



### YARN DYED STRIPES

Yarns are dyed then woven into a striped configuration.



### DURABLE PRESS

Minimum pressing or ironing required. Fabric contains a wrinkle-resistant finish.



### NO BUTTONS

This garment has no buttons that will fall off or catch.



### UV BUTTONS

Non-yellowing buttons for long-lasting whiteness through industrial laundry processing.



### HYDROPHYLIC MOISTURE MANAGEMENT SYSTEM

Technical term meaning moisture wicking. Wicks perspiration away from the skin and spreads it over the fabric face. It then quickly evaporates, allowing the wearer to stay cool, dry and comfortable.



### ROKAP

A Red Kap® term for our no-roll waistband. This garment has enhanced engineering to withstand industrial laundry stress and abrasion. The waistband has a mesh inner lining inside to reduce breakdown in fabric fibers, giving the pant a permanent crease even after industrial laundering.



### WORK NMOTION® FABRIC

Created exclusively for Red Kap® and provides permanent comfort during wear with memory stretch yarns for added flexibility.



### NO-SCRATCH APPAREL

Paint jobs stay scratch free thanks to strategically-designed garment features that keep buttons and snaps under wraps.



### STRETCH CANVAS

The industry's first Industrial Stretch Canvas is extra tough but wears comfortably all day long.



### TRUBLACK

Our 65% Polyester / 35% Cotton Black fabric resists fading wash after wash.



### CLASSIC FIT

This fit features a traditional rise that sits at the natural waist. Slim through the seat and thigh with a slimmer leg opening that will fit over work boots.



### RELAXED FIT

Our relaxed fit jeans feature a traditional rise that sits at the natural waist. Relaxed seat and thigh offer more room for mobility, and the slightly tapered leg fits over work boots.



### LOOSE FIT

This fit features an updated rise that sits slightly below the waist. It is cut through the seat and thigh to offer maximum comfort and ease of movement. The straight leg fits over work boots.



### DUNGAREE FIT

Our dungarees feature a loose fit with an updated rise that sits slightly below the natural waist. They are full cut through seat and thigh for maximum comfort and ease of movement. Straight leg fits over work boots.



### STRAIGHT FIT

Our Women's Straight Fit features an updated rise that sits slightly below the waist. It is slim through the seat and thigh with a leg opening that fits over work boots.





### HI-VISIBILITY CLASS 2 LEVEL 2

Intended for use in activities where greater visibility is necessary during inclement weather conditions or in work environments with risks that exceed those for Class 1. These garments also cover workers who perform tasks that divert their attention from approaching traffic or that put them in close proximity to passing vehicles traveling at 25 mph or higher.



### HI-VISIBILITY CLASS 3 LEVEL 2

Provides the highest level of visibility and are intended for workers who face serious hazards, such as nighttime work, and often have high task loads that divert attention away from approaching vehicle traffic. Garments for these workers provide enhanced visibility to more of the body, such as arms and legs.



### HI-VISIBILITY CLASS E LEVEL 2

Waistband trousers, bib overalls and shorts that meet all minimum requirements for retro-reflective and background materials, except for minimum area and placement required for Performance Class 3, 2 or 1. Class E apparel is not intended to be worn without Performance Class 2 or 3 apparel. When Class E trousers are worn with Performance Class 2 or Class 3 apparel, the overall classification for the ensemble is Performance Class 3.



### UPF 40 RATING

Ultraviolet Protection Factor - A rating designed for fabric and clothing that specifically measures the level of sun protection. UPF measures both UVA and UVB rays.

## FIT CHART ICONS



### MEN'S FIT CHART (MFC)

The "M" represents "Men's" and is followed by the corresponding number of the specific Men's Fit Chart on pgs. 185-188.



### WOMEN'S FIT CHART (LFC)

The "L" represents "Ladies" and is followed by the corresponding number of the specific Women's Fit Chart on pg. 184.

## WASH CODES



INDUSTRIAL LAUNDRY



LIGHT SOIL WASH



HOME WASH



DRY CLEAN

# CONTENTS

Icon Guide	4-5
Red Kap Product Features & Benefits	6-7
Customization	8-9
Shirts	10-39
Pants	40-61
Outerwear	62-71
Coverings	72-75
Coveralls	76-83
Women's	84-97
Automotive	98-111
Hi-Visibility	112-121
Enhanced Visibility	122-131
Housekeeping	132-143
Healthcare	144-149
Food Processing	150-157
Culinary	158-177
Services	178-181
Measuring Guidelines	182-183
Size Charts	184-188
Legal	189
Index / Size Chart Reference	190-191



### ICON GUIDE BOOKMARK

Use the handy bookmark included in the catalog to easily identify icons used for each product.







## PRODUCT FEATURES

It's more than just hard-working workwear. Our Red Kap® workwear collection is designed for the work you do everyday. Stronger seams. More durable fabrics. Pockets in just the right places. With so many features that help you get the job done, our workwear definitely has what it takes.

### SewStrong

Bartacks with angled stitching take the strain to prevent rips.

### Hex Pocket

Corner-free pockets resist dirt and lint buildup. Added bartacks provide extra strength to prevent rips.



CREW SHIRT - SY20BR  
shown on page 16 and 100

### SmartPlacket

Buttons stay neatly hidden for a smooth look. Plackets also allow for custom embroidery application.

### Versa Hem

A straight bottom hem offers a versatile fit with maximum comfort and style. Whether it's a tucked in or tucked out kind of day.



**TOUCHTEX™ TECHNOLOGY**  
**SUPERIOR WICKABILITY**

Red Kap's advanced Touchtex™ fabric actually pulls moisture away from the body, helping it to evaporate more quickly.

**TESTED RIGHT. DONE RIGHT.**



Every Red Kap garment must pass rigorous testing for proof of excellence in design, engineering and construction. That's the Done Right guarantee.





**RoKap**  
No-roll waistband is designed to lie flat and hold its shape.



**Triple Grip System**  
Brass ratcheting zipper securely locks in place while strategically placed bartacks provide extra strength.



**DuraSeams**  
Double-stitched seams provide maximum strength and durability.

DURA-KAP® INDUSTRIAL PANT - PT20BK shown on page 42

## FABRIC THAT WORKS (FOR YOU)

We offer a wide variety of high-quality, durable fabrics made to withstand the wear and tear endured on any jobsite. Whether you're looking for added comfort, durability or a little bit of both, we've got the fabric that suits your needs. And it's Red Kap, so you know it's Done Right.

### 65% POLYESTER / 35% COTTON 80% POLYESTER / 20% COTTON

- Poly-rich fibers deter dust and debris
- Breathability and comfort of cotton
- Strength and durability of polyester
- Lightweight for comfort
- Provides excellent color retention

### 100% COTTON

- All natural fibers offer breathability
- Twill weave adds strength
- Easy care, wrinkle-resistant finish
- Lightweight for comfort
- Soft hand and easy drape on the body

### 100% SPUN POLYESTER

- Strong fibers that stand up to wear and tear
- Fibers have more "give" than natural fibers, offering more comfort and mobility
- Provides excellent color retention
- Processes faster through all wash cycles
- Fibers deter dust and debris

### ANTI-STAT

- Low lint fabric
- Lightweight fabric with roomier fit for added comfort on the job
- Grippers at sleeves and at neck for extra coverage when needed
- External chest and hip pockets for additional storage

### WORK NMOTION®

- Memory Stretch yarns for added flexibility
- Inherent stretch adds additional comfort
- Excellent stretch recovery at stress points (elbows and knees)
- Bartacks at all stretch points for added durability











automotive







**CUSTOMIZATION** ◦ **Black / Red Contrast** - name badge emblem on right front, logo embroidery on left front



**CREW SHIRT** (IL) (LS) (HW) (M 46)

Industrial-friendly ripstop fabric is 75% stronger than other poplin workwear fabrics ◦ Touchtex™ technology with superior color retention, soil release and wickability ◦ Concealed, no-scratch, button-front placket ◦ Straight hem with side vents

4.25 oz. Ripstop, 65% Polyester / 35% Cotton  
Country of Origin: Imported

**SY20**      **SHORT SLEEVE** (Reg) S-4XL, (Long) L-2XL

**SY10**      **LONG SLEEVE** (Reg) S-4XL, (Long) L-2XL

**COLOR:**      **BC, BR, CG, CR, NG**



ripstop fabric detail



**MOTORSPORTS SHIRT**    

Touchtex™ technology with superior color retention, soil release and wickability ◦ Banded collar with sewn-in stays ◦ Contrast shoulders, side panels and inner collar band

4.25 oz. Poplin, 65% Polyester / 35% Cotton  
Country of Origin: Imported

**SP28**      **SHORT SLEEVE** (Reg) S-5XL, (Long) M-3XL

**SP18**      **LONG SLEEVE** (Reg) S-5XL, (Long) M-3XL

**COLOR:**      **BG, NP, RN**

**CUSTOMIZATION** ◦ **Black / Silver** - name badge emblem on right front, logo embroidery on left front







SY50LB



**SOLID RIPSTOP SHIRT**

Pre-cure durable press ◦ Touchtex™ technology with superior color retention, soil release and wickability ◦ Seven-button front, including button at neck ◦ Two-piece, lined, banded, topstitched collar with sewn-in stays ◦ Two button-thru functional flapped pockets with angled bartacks, sewn-down pencil stall on left pocket ◦ Center front placket ◦ Separate two-piece yolk ◦ Straight hem with side vents

4.25 oz. Stretch Poplin Ripstop, 65% Polyester / 35% Cotton  
Country of Origin: Imported

**SY60**      **SHORT SLEEVE** (Reg) S-3XL, (Long) L-2XL

**SY50**      **LONG SLEEVE** (Reg) S-3XL, (Long) L-2XL

**COLOR:**      **BK, CH, GY, KH, LB, NV**



ripstop fabric detail



SP24GM



**PERFORMANCE TECHNICIAN SHIRT**



Touchtex™ technology with superior color retention, soil release and wickability • Banded collar with sewn-in stays

4.25 oz. Poplin, 65% Polyester / 35% Cotton  
Country of Origin: Imported

**SP24GM**    **SHORT SLEEVE** (Reg) S-4XL, (Long) M-3XL

**SP14GM**    **LONG SLEEVE** (Reg) S-4XL, (Long) M-3XL

**COLOR:**    **GREY / BLACK WITH RED / WHITE STRIPING**

SP24AC



**TECHNICIAN SHIRT**

Touchtex™ technology with superior color retention, soil release and wickability • Banded collar with sewn-in stays

4.25 oz. Poplin, 65% Polyester / 35% Cotton  
Country of Origin: Imported

**SP24AC**    **SHORT SLEEVE** (Reg) S-3XL

**SP14AC**    **LONG SLEEVE** (Reg) S-3XL, (Long) M-2XL

**COLOR:**    **NAVY / GREY WITH NAVY / RED STRIPING**



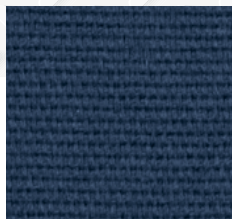




BK black

NV navy

CH charcoal



stretch canvas fabric detail



PT2ANV

### PERFORMANCE SHOP PANT



The first IL-friendly true stretch fabric ◦ Touchtex™ technology with superior color retention and soil release ◦ Relaxed, modern fit that combines the durability of a work pant with the comfort of a jean ◦ Double-needle stitching ◦ Concealed, no-scratch waistband button ◦ Invisible stretch waistband expands up to three additional inches ◦ Wide, reinforced belt loops ◦ Reinforced, deep front pocket bags ◦ Two jean-style front pockets, two oversized hip pockets, no-scratch cargo pocket on left leg and unique double-pocket design on right leg ◦ Reinforced knees with strategically placed darts ◦ Full inseam gusset ◦ Relaxed cut leg fits easily over work boots ◦ Patent pending ◦ Shop Short (PT4A) with similar features shown on the right page

8 oz. Twill, 54% Polyester / 42% Cotton / 4% Spandex  
Country of Origin: Imported

**PT2A**      30-50  
**COLOR:**    **BK, CH, NV**



PATENT  
PENDING

PT4ACH

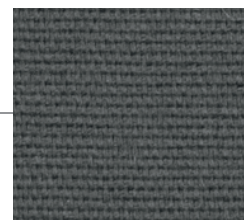
### PERFORMANCE SHOP SHORT



The first IL-friendly true stretch fabric ◦ Touchtex™ technology with superior color retention and soil release ◦ Relaxed, modern fit that combines the durability of a work pant with the comfort of a jean ◦ Double-needle stitching ◦ Concealed, no-scratch waistband button ◦ Invisible stretch waistband expands up to 3 additional inches ◦ Wide, reinforced belt loops ◦ Reinforced, deep front pocket bags ◦ Two jean-style front pockets, two oversized hip pockets, no-scratch cargo pocket on left leg and unique double-pocket design on right leg ◦ Patent pending ◦ Shop Pant (PT2A) with similar features shown on the left page

8 oz. Twill, 54% Polyester / 42% Cotton / 4% Spandex  
Country of Origin: Imported

**PT4A**      30-50  
**COLOR:**    **BK, CH, NV**



stretch canvas fabric detail







**CUSTOMIZATION** ◦ Navy - logo embroidery on left front



**BK** black

**SG** spruce green

**BN** brown

**CH** charcoal

**NV** navy

JT22CH



**SLASH POCKET JACKET** (IL) (LS) (HW) (M 12)

Permanently lined with black quilted lining ◦ Two-piece, topstitched collar with sewn-in stays ◦ Two lower inset slash pockets and utility pocket on left sleeve ◦ Two-button side waist adjustment ◦ Waist-length

7.25 oz. Twill  
Shell: 65% Polyester / 35% Cotton  
Lining: 100% Polyester  
Insulation: 100% Polyester (insulation content may vary)  
Country of Origin: Imported

**JT22** (Reg) S-6XL, (Long) M-5XL, (X Long) XL-3XL

**COLOR:** **BK, BN, CH, NV, SG**





JT50NV



**PERMA-LINED PANEL JACKET** (IL) (LS) (HW) M12

Permanently lined with black quilted lining ◦ Two-piece, topstitched collar with sewn-in stays ◦ Two lower inset, on-seam pockets and utility pocket on left sleeve ◦ Hip-length

7.25 oz. Twill

Shell: 65% Polyester / 35% Cotton

Lining: 100% Polyester

Insulation: 100% Polyester (insulation content may vary)

Country of Origin: Imported

**JT50** (Reg) S-6XL, (Long) M-5XL,  
(X Long) XL-3XL

**COLOR:** **BK, BN, CH, NV, SG**



BK black



BN brown



CH charcoal



NV navy



SG spruce green

AB12BK



**NO-SCRATCH LEATHER BELT** (IL)

No-scratch buckle ◦ Unisex

100% Leather

Country of Origin: Imported

**AB12BK** S-XL

**COLOR:** **BK**



BK black

AB14BK



**WEBBED ADJUSTABLE BELT** (IL)

Webbed adjustable ◦ Leather closure with hook-and-loop, no-scratch buckle ◦ Unisex

100% Nylon

Country of Origin: Imported

**AB14BK** M-L

**COLOR:** **BK**



BK black







A complete line of dealership apparel is available for each program.  
Contact your Red Kap Sales Representative for brochures.



## ACURA

**TECHNICIAN SHIRT** (IL) (LS) (HW)  
4.25 oz. Poplin, 65% Polyester / 35% Cotton

**SP24AA** SHORT SLEEVE (Reg) S-3XL, (Long) L-2XL

**SP14AA** LONG SLEEVE (Reg) S-2XL, (Long) L-XL

**COLOR:** LIGHT GREY / NAVY (AA) - **SP24AA SHOWN**

**TECHNICIAN PANT AND SHORT** (IL) (LS) (HW)  
7.5 oz. Twill, 65% Polyester / 35% Cotton

**PT20AA\*** PANT 28-60

**PT26AA\*** SHORT 28-50

**COLOR:** NAVY (NV) - **PT20AA SHOWN**

\*Customization added at time of order.  
Standard lead times apply.



## Audi

**TECHNICIAN SHIRT** (IL) (LS) (HW)  
4.25 oz. Ripstop, 65% Polyester / 35% Cotton

**SY24AU\*** SHORT SLEEVE (Reg) S-4XL, (Long) L-2XL

**SY14AU\*** LONG SLEEVE (Reg) S-4XL, (Long) L-2XL

**COLOR:** CHARCOAL / GREY (AU) - **SY24AU SHOWN**

**TECHNICIAN PANT AND SHORT** (IL) (LS) (HW)  
8 oz. Twill, 54% Polyester / 42% Cotton / 4% Spandex

**PT2A** PANT 30-50

**PT4A** SHORT 30-50

**COLOR:** BLACK (BK), CHARCOAL (CH),  
**PT2ACH SHOWN**

\*Customization added at time of order.  
Standard lead times apply.



## Certified Service

**TECHNICIAN SHIRT** (IL) (LS) (HW)  
4.25 oz. Ripstop, 65% Polyester / 35% Cotton Ripstop Texture

**SY24GM** SHORT SLEEVE (Reg) S-4XL, (Long) L-4XL

**SY14GM** LONG SLEEVE (Reg) S-3XL, (Long) M-2XL

**COLOR:** BLACK / LIGHT GREY (GM) - **SY24GM SHOWN**

**TECHNICIAN PANT AND SHORT** (IL) (LS) (HW)  
8 oz. Twill, 65% Polyester / 35% Cotton

**PT88** PANT 30-50

**PT66** SHORT 30-50

**COLOR:** BLACK (BK) - **PT88BK SHOWN**



## HONDA

**TECHNICIAN SHIRT** (IL) (LS) (HW)  
4.25 oz. Ripstop, 65% Polyester / 35% Cotton Ripstop Texture

**SY24HD** SHORT SLEEVE (Reg) S-4XL, (Long) L-2XL

**SY14HD** LONG SLEEVE (Reg) S-3XL, (Long) L-2XL

**COLOR:** NAVY / LIGHT GREY / HONDA BLUE (HD)  
**SY24HD SHOWN**

**TECHNICIAN PANT AND SHORT** (IL) (LS) (HW)  
8 oz. Twill, 54% Polyester / 42% Cotton / 4% Spandex

**PT2A** PANT 30-50

**PT4A** SHORT 30-50

**COLOR:** NAVY (NV) - **PT2ANV SHOWN**



## EQUUS | HYUNDAI

**TECHNICIAN SHIRT** (IL) (LS) (HW)  
4.25 oz. Heathered Poplin, 65% Polyester / 35% Cotton

**SH20CH\*** SHORT SLEEVE (Reg) S-3XL, (Long) L-2XL

**SH10CH\*** LONG SLEEVE (Reg) S-3XL, (Long) L-2XL

**COLOR:** CHARCOAL (CH) - **SH20CH SHOWN**

**TECHNICIAN PANT** (IL) (LS) (HW)  
7.5 oz. Twill, 65% Polyester / 35% Cotton

**PT20** PANT 28-60

**COLOR:** BLACK (BK) - **PT20BK SHOWN**

\*Specify EL-LUF-ELJ577 to add Equus logo. Customization  
added at time of order. Standard lead times apply.



## INFINITI

**TECHNICIAN SHIRT** (IL) (LS) (HW)  
4.25 oz. Ripstop, 65% Polyester / 35% Cotton Ripstop Texture

**SY24IN** SHORT SLEEVE (Reg) S-3XL, (Long) L-2XL

**SY14IN** LONG SLEEVE (Reg) S-3XL, (Long) L-2XL

**COLOR:** BLACK / CHARCOAL (IN) - **SY24IN SHOWN**

**TECHNICIAN PANT AND SHORT** (IL) (LS) (HW)  
8 oz. Twill, 54% Polyester / 42% Cotton / 4% Spandex

**PT2A** PANT 30-50

**PT4A** SHORT 30-50

**COLOR:** BLACK (BK) - **PT2ABK SHOWN**



NEW



**TECHNICIAN SHIRT** (IL) (LS) (HW)  
4.25 oz. Ripstop, 65% Polyester / 35% Cotton

**SY24FD** SHORT SLEEVE (Reg) S-4XL, (Long) L-2XL

**SY14FD** LONG SLEEVE (Reg) S-3XL, (Long) L-2XL

**COLOR:** CHARCOAL / ROYAL (FD) - **SY14FD SHOWN**

**TECHNICIAN PANT AND SHORT** (IL) (LS) (HW)  
8 oz. Twill, 54% Polyester / 42% Cotton / 4% Spandex

**PT2A** PANT 30-50

**PT4A** SHORT 30-50

**COLOR:** CHARCOAL (CH) - **PT2ACH SHOWN**



**TECHNICIAN SHIRT** (IL) (LS) (HW)  
4.25 oz. Poplin, 65% Polyester / 35% Cotton

**SP24QL** SHORT SLEEVE (Reg) S-3XL, (Long) L-2XL

**SP14QL** LONG SLEEVE (Reg) S-3XL, (Long) L-2XL

**COLOR:** ROYAL BLUE / CHARCOAL WITH ORANGE STRIPE (QL) - **SP14QL SHOWN**

**TECHNICIAN PANT** (IL) (LS) (HW)  
7.5 oz. Twill, 65% Polyester / 35% Cotton

**PT20\*** PANT 28-54

**COLOR:** CHARCOAL (CH) - **PT20CH SHOWN**

\*Pant stocked blank. To add route pocket with Quick Lane logo specify AP-RLS-EPBLQL. Customization added at the time of order. Standard lead times apply.



**TECHNICIAN SHIRT** (IL) (LS) (HW)  
4.25 oz. Ripstop, 65% Polyester / 35% Cotton Ripstop Texture

**SY24HY** SHORT SLEEVE (Reg) S-3XL, (Long) L-2XL

**SY14HY** LONG SLEEVE (Reg) S-3XL, (Long) L-2XL

**COLOR:** GREY / NAVY BLUE (HY) - **SY24HY SHOWN**

**TECHNICIAN PANT AND SHORT** (IL) (LS) (HW)  
8 oz. Twill, 54% Polyester / 42% Cotton / 4% Spandex

**PT2A** PANT 30-50

**PT4A** SHORT 30-50

**COLOR:** NAVY (NV) - **PT2ANV SHOWN**



**TECHNICIAN SHIRT** (IL) (LS) (HW)  
4.25 oz. Ripstop, 65% Polyester / 35% Cotton Ripstop Texture

**SY20HX\*** SHORT SLEEVE (Reg) S-4XL, (Long) L-2XL

**SY10HX\*** LONG SLEEVE (Reg) S-4XL, (Long) L-2XL

**COLOR:** GREY / NAVY BLUE (HX) - **SY10HX SHOWN**

**TECHNICIAN PANT AND SHORT** (IL) (LS) (HW)  
8 oz. Twill, 54% Polyester / 42% Cotton / 4% Spandex

**PT2A** PANT 30-50

**PT4A** SHORT 30-50

**COLOR:** NAVY (NV) - **PT2ANV SHOWN**

\*Customization added at time of order. Standard lead times apply.



NEW



**TECHNICIAN SHIRT** (IL) (LS) (HW)  
4.25 oz. Poplin, 65% Polyester / 35% Cotton

**SP24LX** SHORT SLEEVE (Reg) S-3XL, (Long) L-2XL

**SP14LX** LONG SLEEVE (Reg) S-3XL, (Long) L-2XL

**COLOR:** BLACK / GREY (LX) - **SP24LX SHOWN**

**TECHNICIAN PANT** (IL) (LS) (HW)  
7.5 oz. Twill, 65% Polyester / 35% Cotton

**PT20BK-LH\*** PANT 28-54

**COLOR:** BLACK (BK) - **PT20BK-LH SHOWN**

\*Must specify "LH" to add route pocket with Lexus logo. Customization added at time of order. Standard lead times apply.



**TECHNICIAN SHIRT** (IL) (LS) (HW)  
5.25 oz. Twill, 65% Polyester / 35% Cotton

**ST62GH\*** SHORT SLEEVE (Reg) S-4XL

**ST52GH\*** LONG SLEEVE (Reg) S-4XL, (Long) L-XL

**COLOR:** CHARCOAL (CH) - **ST62GH SHOWN**

**TECHNICIAN PANT** (IL) (LS) (HW)  
8.5 oz. Twill, 65% Polyester / 35% Cotton

**PT62** PANT 28-56

**COLOR:** CHARCOAL (CH) - **PT62CH SHOWN**

\*Specify EL-LUF-ELK085 to add Lincoln logo. Customization added at time of order. Standard lead times apply.







A complete line of dealership apparel is available for each program.  
Contact your Red Kap Sales Representative for brochures.



**TECHNICIAN SHIRT** (IL) (LS) (HW)  
4.25 oz. Poplin, 65% Polyester / 35% Cotton

**SP24MZ SHORT SLEEVE** (Reg) S-3XL, (Long) L-2XL

**SP14MZ LONG SLEEVE** (Reg) S-3XL, (Long) L-2XL

**COLOR:** NAVY / GREY WITH MAZDA BLUE STRIPE (MZ)  
**SP14MZ SHOWN**

**TECHNICIAN PANT** (IL) (LS) (HW)  
8 oz. Twill, 65% Polyester / 35% Cotton

**PT20\* PANT 28-60**

**COLOR:** NAVY (NV) - **PT20NV SHOWN**

\*Specify AP-RLS-EP7LMU to add route pocket with Mazda logo. Customization added at time of order. Standard lead times apply.



## Mercedes-Benz

**TECHNICIAN SHIRT** (IL) (LS) (HW)  
4.25 oz. Poplin, 65% Polyester / 35% Cotton

**SP24MC SHORT SLEEVE** (Reg) S-3XL

**SP14MC LONG SLEEVE** (Reg) S-3XL, (Long) L-2XL

**COLOR:** LIGHT GREY / ROYAL BLUE / CHARCOAL (MC)  
**SP24MC SHOWN**

**TECHNICIAN PANT** (IL) (LS) (HW)  
8 oz. Twill, 65% Polyester / 35% Cotton

**PT88 PANT 30-50**

**COLOR:** BLACK (BK) - **PT88BK SHOWN**



**TECHNICIAN SHIRT** (IL) (LS) (HW)  
4.25 oz. Ripstop, 65% Polyester / 35% Cotton Ripstop Texture

**SY24ME SHORT SLEEVE** (Reg) M-3XL, (Long) L-2XL

**SY14ME LONG SLEEVE** (Reg) M-3XL, (Long) L-2XL

**COLOR:** BLACK / ROYAL BLUE (ME) - **SY24ME SHOWN**

**TECHNICIAN PANT AND SHORT** (IL) (LS) (HW)  
8 oz. Twill, 65% Polyester / 35% Cotton

**PT88BK\* PANT 30-50**

**PT66BK\* SHORT 30-50**

**COLOR:** BLACK (BK) - **PT88BK SHOWN**

\*Specify EL-PFR-ELJ598 to add Express Lane logo to right cargo pocket flap. Customization added at time of order. Standard lead times apply.



## NISSAN

**TECHNICIAN SHIRT** (IL) (LS) (HW)  
4.25 oz. Poplin, 65% Polyester / 35% Cotton

**SP24NS SHORT SLEEVE** (Reg) S-3XL, (Long) L-3XL

**SP14NS LONG SLEEVE** (Reg) S-3XL, (Long) M-3XL

**COLOR:** CHARCOAL / BLACK WITH RED STRIPING (NS)  
**SP14NS SHOWN**

**TECHNICIAN PANT AND SHORT** (IL) (LS) (HW)  
8 oz. Twill, 54% Polyester / 42% Cotton / 4% Spandex

**PT2A PANT 30-50**

**PT4A SHORT 30-50**

**COLOR:** BLACK (BK) CHARCOAL (CH)  
**PT2ABK SHOWN**



## Volkswagen

**TECHNICIAN SHIRT** (IL) (LS) (HW)  
4.25 oz. Poplin, 65% Polyester / 35% Cotton

**SP24VG SHORT SLEEVE** (Reg) S-3XL, (Long) L-2XL

**SP14VG LONG SLEEVE** (Reg) S-3XL, (Long) L-2XL

**COLOR:** BLACK AND SILVER WITH ROYAL BLUE CONTRAST (VG) - **SP14VG SHOWN**

**TECHNICIAN PANT** (IL) (LS) (HW)  
7.5 oz. Twill, 65% Polyester / 35% Cotton

**PT20\* PANT 28-54**

**COLOR:** BLACK (BK) - **PT20BK SHOWN**

\*Specify AP-RLS-EP6LWB to add route pocket with Volkswagen logo. Customization added at time of order. Standard lead times apply.

Cell Phone Pocket Short also available in black.



**TECHNICIAN SHIRT\*** (IL) (LS) (HW)  
4.25 oz. Ripstop, 65% Polyester / 35% Cotton Ripstop Texture

**SY20VX SHORT SLEEVE** (Reg) S-4XL, (Long) L-2XL

**SY10VX LONG SLEEVE** (Reg) M-4XL, (Long) L-2XL

**COLOR:** CHARCOAL / LIGHT GREY WITH ROYAL BLUE AND WHITE (VX) - **SY10VX SHOWN**

**TECHNICIAN PANT** (IL) (LS) (HW)  
8 oz. Twill, 65% Polyester / 35% Cotton

**PT88\* PANT 28-50**

**COLOR:** BLACK (BK) - **PT88BK SHOWN**

\*Specify EL-PFR-ELM411 to add Volkswagen Service Xpress logo to cargo pocket. Customization added at time of order. Standard lead times apply.

Cell Phone Pocket Short also available in black.



## MITSUBISHI

**TECHNICIAN SHIRT** (IL) (LS) (HW)  
4.25 oz. Poplin, 65% Polyester / 35% Cotton

**SP24GM\* SHORT SLEEVE** (Reg) S-4XL, (Long) M-3XL

**SY14GM\* LONG SLEEVE** (Reg) S-4XL, (Long) M-3XL

**COLOR:** LIGHT GREY / BLACK WITH RED AND WHITE STRIPING (GM) - **SP14GM SHOWN**

**TECHNICIAN PANT** (IL) (LS) (HW)  
7.5 oz. Twill, 65% Polyester / 35% Cotton

**PT20 PANT 28-60**

**COLOR:** BLACK (BK), CHARCOAL (CH) - **PT20CH SHOWN**

\*Specify EL-LUF-EL9691 to add Mitsubishi logo. Customization added at time of order. Standard lead times apply.



**TECHNICIAN SHIRT** (IL) (LS) (HW)  
4.25 oz. Ripstop, 65% Polyester / 35% Cotton Ripstop Texture

**SY24MP SHORT SLEEVE** (Reg) S-4XL, (Long) L-3XL

**SY14MP LONG SLEEVE** (Reg) S-3XL, (Long) M-2XL

**COLOR:** BLACK / ROYAL BLUE (MP) - **SY14MP SHOWN**

**TECHNICIAN PANT AND SHORT** (IL) (LS) (HW)  
8 oz. Twill, 65% Polyester / 35% Cotton

**PT88\* PANT 30-50**

**PT66\* SHORT 30-50**

**COLOR:** BLACK (BK) - **PT88BK SHOWN**

\*Specify EL-PFR-ELJ869 to add Omega "M" to right cargo pocket flap. Customization added at time of order. Standard lead times apply.



## SUBARU

**TECHNICIAN SHIRT** (IL) (LS) (HW)  
4.25 oz. Poplin, 65% Polyester / 35% Cotton

**SP24SB SHORT SLEEVE** (Reg) S-3XL

**SP14SB LONG SLEEVE** (Reg) S-3XL, (Long) L-2XL

**COLOR:** ROYAL BLUE / CHARCOAL WITH BLACK STRIPING (SB) - **SP24SB SHOWN**

**TECHNICIAN PANT** (IL) (LS) (HW)  
7.5 oz. Twill, 65% Polyester / 35% Cotton

**PT2C PANT 28-50**

**COLOR:** BLACK (BK) - **PT2CBK SHOWN**



## TOYOTA

**TECHNICIAN SHIRT** (IL) (LS) (HW)  
4.25 oz. Poplin, 65% Polyester / 35% Cotton

**SP24TT SHORT SLEEVE** (Reg) S-4XL, (Long) L-4XL

**SP14TT LONG SLEEVE** (Reg) S-3XL, (Long) M-3XL

**COLOR:** CHARCOAL / LIGHT GREY (TT) - **SP14TT SHOWN**

**TECHNICIAN PANT** (IL) (LS) (HW)  
7.5 oz. Twill, 65% Polyester / 35% Cotton

**PT20TT\* PANT 28-60**

**COLOR:** CHARCOAL (TT) - **PT20TT SHOWN**

\*Customization added at time of order. Standard lead times apply.



## VOLVO

**TECHNICIAN SHIRT** (IL) (LS) (HW)  
4.25 oz. Poplin, 65% Polyester / 35% Cotton

**SP24VL SHORT SLEEVE** (Reg) S-3XL, (Long) L-2XL

**SP14VL LONG SLEEVE** (Reg) S-3XL, (Long) M-3XL

**COLOR:** NAVY / LIGHT GREY (VL) - **SP14VL SHOWN**

**TECHNICIAN PANT AND SHORT** (IL) (LS) (HW)  
8 oz. Twill, 54% Polyester / 42% Cotton / 4% Spandex

**PT2A PANT 30-50**

**PT4A SHORT 30-50**

**COLOR:** CHARCOAL (CH) - **PT2ACH SHOWN**



NEW

## VOLVO PERSONAL SERVICE

**TECHNICIAN SHIRT** (IL) (LS) (HW)  
4.25 oz. Poplin, 65% Polyester / 35% Cotton

**SP24VP\* SHORT SLEEVE** (Reg) S-3XL, (Long) L-2XL

**SP14VP\* LONG SLEEVE** (Reg) S-3XL, (Long) M-3XL

**COLOR:** NAVY (NV) - **SP24VP SHOWN**

**TECHNICIAN PANT AND SHORT** (IL) (LS) (HW)  
8 oz. Twill, 54% Polyester / 42% Cotton / 4% Spandex

**PT2A PANT 30-50**

**PT4A SHORT 30-50**

**COLOR:** CHARCOAL (CH) - **PT2ACH SHOWN**

\*Customization added at time of order. Standard lead times apply.

