



DONE RIGHT.®

2015 workwear catalog

DONE



RIGHT.®



MORE THAN JUST A SLOGAN. IT'S A WAY OF LIFE.



Here's to the early risers. The heavy lifters. The people who believe there's only one way a job should be done – and that's **DONE RIGHT**. We've been outfitting these hard workers since 1923 in everything from shirts, pants and overalls to lab coats and butcher wraps.

TODAY, WE OUTFIT MORE THAN 16 MILLION WORKERS, AND WE'RE JUST GETTING STARTED.

So, here's to the people who do the tough jobs. The challenging jobs. The messy jobs. The bending, twisting jobs. The jobs that make you think on your feet. And yes, they can be the fun jobs – at least for those of us who take great pride in our work and pride in the people we work alongside. We make Red Kap for all of you. And we'll continue, for as long as there are people who never quit, who go to work before the sun comes up and head home for dinner long after the sun's gone down.



ICON GUIDE

Use the below legend as a guide to help quickly identify unique features and benefits for Red Kap® garments after each product name.



WOMEN'S COMPANION PIECE AVAILABLE

Garments on pages 12-61 featuring this icon have a female companion piece located in the Women's Workwear section on pages 86-97.



TOUCHTEX™ TECHNOLOGY

Superior color retention, soil release and wickability.



TOUCHTEX PRO™

Same features as Touchtex but with an even softer hand. Available on bottoms only.



YARN DYED STRIPES

Yarns are dyed then woven into a striped configuration.



DURABLE PRESS

Minimum pressing or ironing required. Fabric contains a wrinkle-resistant finish.



NO BUTTONS

This garment has no buttons that will fall off or catch.



UV BUTTONS

Non-yellowing buttons for long-lasting whiteness through industrial laundry processing.



HYDROPHYLIC MOISTURE MANAGEMENT SYSTEM

Technical term meaning moisture wicking. Wicks perspiration away from the skin and spreads it over the fabric face. It then quickly evaporates, allowing the wearer to stay cool, dry and comfortable.



ROKAP

A Red Kap® term for our no-roll waistband. This garment has enhanced engineering to withstand industrial laundry stress and abrasion. The waistband has a mesh inner lining inside to reduce breakdown in fabric fibers, giving the pant a permanent crease even after industrial laundering.



WORK NMOTION® FABRIC

Created exclusively for Red Kap® and provides permanent comfort during wear with memory stretch yarns for added flexibility.



NO-SCRATCH APPAREL

Paint jobs stay scratch free thanks to strategically-designed garment features that keep buttons and snaps under wraps.



STRETCH CANVAS

The industry's first Industrial Stretch Canvas is extra tough but wears comfortably all day long.



TRUBLACK

Our 65% Polyester / 35% Cotton Black fabric resists fading wash after wash.



CLASSIC FIT

This fit features a traditional rise that sits at the natural waist. Slim through the seat and thigh with a slimmer leg opening that will fit over work boots.



RELAXED FIT

Our relaxed fit jeans feature a traditional rise that sits at the natural waist. Relaxed seat and thigh offer more room for mobility, and the slightly tapered leg fits over work boots.



LOOSE FIT

This fit features an updated rise that sits slightly below the waist. It is cut through the seat and thigh to offer maximum comfort and ease of movement. The straight leg fits over work boots.



DUNGAREE FIT

Our dungarees feature a loose fit with an updated rise that sits slightly below the natural waist. They are full cut through seat and thigh for maximum comfort and ease of movement. Straight leg fits over work boots.



STRAIGHT FIT

Our Women's Straight Fit features an updated rise that sits slightly below the waist. It is slim through the seat and thigh with a leg opening that fits over work boots.



HI-VISIBILITY CLASS 2 LEVEL 2

Intended for use in activities where greater visibility is necessary during inclement weather conditions or in work environments with risks that exceed those for Class 1. These garments also cover workers who perform tasks that divert their attention from approaching traffic or that put them in close proximity to passing vehicles traveling at 25 mph or higher.



HI-VISIBILITY CLASS 3 LEVEL 2

Provides the highest level of visibility and are intended for workers who face serious hazards, such as nighttime work, and often have high task loads that divert attention away from approaching vehicle traffic. Garments for these workers provide enhanced visibility to more of the body, such as arms and legs.



HI-VISIBILITY CLASS E LEVEL 2

Waistband trousers, bib overalls and shorts that meet all minimum requirements for retro-reflective and background materials, except for minimum area and placement required for Performance Class 3, 2 or 1. Class E apparel is not intended to be worn without Performance Class 2 or 3 apparel. When Class E trousers are worn with Performance Class 2 or Class 3 apparel, the overall classification for the ensemble is Performance Class 3.



UPF 40 RATING

Ultraviolet Protection Factor - A rating designed for fabric and clothing that specifically measures the level of sun protection. UPF measures both UVA and UVB rays.

FIT CHART ICONS



MEN'S FIT CHART (MFC)

The "M" represents "Men's" and is followed by the corresponding number of the specific Men's Fit Chart on pgs. 185-188.



WOMEN'S FIT CHART (LFC)

The "L" represents "Ladies" and is followed by the corresponding number of the specific Women's Fit Chart on pg. 184.

WASH CODES



INDUSTRIAL LAUNDRY



LIGHT SOIL WASH



HOME WASH



DRY CLEAN

CONTENTS

Icon Guide	4-5
Red Kap Product Features & Benefits	6-7
Customization	8-9
Shirts	10-39
Pants	40-61
Outerwear	62-71
Coverings	72-75
Coveralls	76-83
Women's	84-97
Automotive	98-111
Hi-Visibility	112-121
Enhanced Visibility	122-131
Housekeeping	132-143
Healthcare	144-149
Food Processing	150-157
Culinary	158-177
Services	178-181
Measuring Guidelines	182-183
Size Charts	184-188
Legal	189
Index / Size Chart Reference	190-191



ICON GUIDE BOOKMARK

Use the handy bookmark included in the catalog to easily identify icons used for each product.





PRODUCT FEATURES

It's more than just hard-working workwear. Our Red Kap® workwear collection is designed for the work you do everyday. Stronger seams. More durable fabrics. Pockets in just the right places. With so many features that help you get the job done, our workwear definitely has what it takes.

SewStrong

Bartacks with angled stitching take the strain to prevent rips.

Hex Pocket

Corner-free pockets resist dirt and lint buildup. Added bartacks provide extra strength to prevent rips.



CREW SHIRT - SY20BR
shown on page 16 and 100

SmartPlacket

Buttons stay neatly hidden for a smooth look. Plackets also allow for custom embroidery application.

Versa Hem

A straight bottom hem offers a versatile fit with maximum comfort and style. Whether it's a tucked in or tucked out kind of day.



TOUCHTEX™ TECHNOLOGY
SUPERIOR WICKABILITY

Red Kap's advanced Touchtex™ fabric actually pulls moisture away from the body, helping it to evaporate more quickly.

TESTED RIGHT. DONE RIGHT.



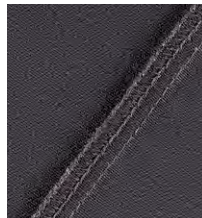
Every Red Kap garment must pass rigorous testing for proof of excellence in design, engineering and construction. That's the Done Right guarantee.



RoKap
No-roll waistband is designed to lie flat and hold its shape.



Triple Grip System
Brass ratcheting zipper securely locks in place while strategically placed bartacks provide extra strength.



DuraSeams
Double-stitched seams provide maximum strength and durability.

DURA-KAP® INDUSTRIAL PANT - PT20BK shown on page 42

FABRIC THAT WORKS (FOR YOU)

We offer a wide variety of high-quality, durable fabrics made to withstand the wear and tear endured on any jobsite. Whether you're looking for added comfort, durability or a little bit of both, we've got the fabric that suits your needs. And it's Red Kap, so you know it's Done Right.

65% POLYESTER / 35% COTTON 80% POLYESTER / 20% COTTON

- Poly-rich fibers deter dust and debris
- Breathability and comfort of cotton
- Strength and durability of polyester
- Lightweight for comfort
- Provides excellent color retention

100% COTTON

- All natural fibers offer breathability
- Twill weave adds strength
- Easy care, wrinkle-resistant finish
- Lightweight for comfort
- Soft hand and easy drape on the body

100% SPUN POLYESTER

- Strong fibers that stand up to wear and tear
- Fibers have more "give" than natural fibers, offering more comfort and mobility
- Provides excellent color retention
- Processes faster through all wash cycles
- Fibers deter dust and debris

ANTI-STAT

- Low lint fabric
- Lightweight fabric with roomier fit for added comfort on the job
- Grippers at sleeves and at neck for extra coverage when needed
- External chest and hip pockets for additional storage

WORK NMOTION®

- Memory Stretch yarns for added flexibility
- Inherent stretch adds additional comfort
- Excellent stretch recovery at stress points (elbows and knees)
- Bartacks at all stretch points for added durability







| culinary



KC82WH

CHEF DESIGNS MASTER CHEF COAT (IL) (LS) (HW) M 12

Stand-up collar ◦ French-cut front ◦ Double breasted with twelve knot buttons ◦ Welted chest pocket ◦ Thermometer pocket on sleeve ◦ Underarm ventilation ◦ Pleated action back for ease of movement ◦ 29 1/2" back length on size medium

100% Cotton Twill
Country of Origin: Imported

KC82 (Reg) S-3XL

COLOR: WH



WH white



0440WH

CHEF DESIGNS 100% COTTON CHEF COAT (HW) M 12

Stand-up collar ◦ Double breasted with eight knot buttons ◦ Left chest pocket ◦ Thermometer pocket on left sleeve ◦ Underarm ventilation eyelets ◦ Clean-finish vented cuffs ◦ 30" back length on size medium

100% Cotton Twill
Country of Origin: Imported

0440 (Reg) S-4XL

COLOR: WH



WH white



0401WH

CHEF DESIGNS WOMEN'S CHEF COAT (IL) (LS) (HW) L 01

Double breasted with ten pearl buttons ◦ Non-yellowing UV buttons for long-lasting whiteness through industrial laundry processing ◦ Left chest pocket ◦ Thermometer pocket on left sleeve ◦ Clean-finish vented cuffs ◦ Pre-shrunk with soil release finish ◦ 28 1/2" back length on size medium

65% Polyester / 35% Cotton Twill
Country of Origin: Imported

0401 (Reg) S-3XL

COLOR: WH



WH white



KV30WH



CHEF DESIGNS VENTED BACK CHEF COAT      

Ten pearl buttons ◦ Non-yellowing UV buttons for long-lasting whiteness through industrial laundry processing ◦ Left chest pocket ◦ Thermometer pocket on left sleeve ◦ Clean-finish cuff ◦ Vented back with wickable mesh insert ◦ 30" back length on size medium

*80% Polyester / 20% Cotton Poplin
Country of Origin: Imported*

KV30 (Reg) S-3XL

COLOR: WH



vented back detail



0421WH



CHEF DESIGNS TEN KNOT BUTTON CHEF COAT

IL LS HW M 12

Stand-up collar ◦ Double breasted with ten knot buttons ◦ Left chest pocket ◦ Thermometer pocket on left sleeve ◦ Clean-finish vented cuffs ◦ 30" back length on size medium

100% Spun Polyester Plain Weave
Country of Origin: Imported

0421 (Reg) XS-5XL

COLOR: WH



WH white

0420WH



CHEF DESIGNS EXECUTIVE CHEF COAT

IL LS HW M 12

Stand-up collar ◦ Double breasted with ten knot buttons ◦ Left chest pocket ◦ Thermometer pocket on left sleeve ◦ Embroidered underarm ventilation eyelets ◦ Clean-finish vented cuffs ◦ Pre-shrunk with soil release finish ◦ 30" back length on size medium

65% Polyester / 35% Cotton Twill
Country of Origin: Imported

0420 (Reg) XS-4XL, (Long) M-XL

COLOR: WH



WH white

0415WH



**CHEF DESIGNS TEN PEARL BUTTON
CHEF COAT** (IL) (LS) (HW) (M 12)

Stand-up collar ◦ Double breasted with 10 pearl buttons ◦ Non-yellowing UV buttons for long-lasting whiteness through industrial laundry processing ◦ Left chest pocket ◦ Clean-finish vented cuffs ◦ Pre-shrunk with soil release finish ◦ 30" back length on size medium

80% Polyester / 20% Cotton Fine Line Twill
Country of Origin: Imported

0400 WITHOUT THERMOMETER POCKET
(Reg) 36-56

COLOR: WH

65% Polyester / 35% Cotton Twill
Country of Origin: Imported

0415 THERMOMETER POCKET ON LEFT SLEEVE
(Reg) S-4XL

COLOR: WH

100% Spun Polyester Plain Weave
Country of Origin: Imported

0423 THERMOMETER POCKET ON LEFT SLEEVE
(Reg) XS-5XL

COLOR: WH



WH white



CUSTOMIZATION ◦ black collar overlay with gold trim, black cuff overlay with gold trim, logo embroidery on left upper chest



KT80WH



CHEF DESIGNS TUNIC CHEF COAT (IL) (LS) (HW) (M 12)

Crossover collar ◦ Concealed gripper front ◦ Thermometer pocket on left sleeve ◦ Clean-finish vented cuffs ◦ Pre-shrunk with soil release finish ◦ 30" back length on size medium

65% Polyester / 35% Cotton Twill
Country of Origin: Imported

KT80 (Reg) S-2XL

COLOR: WH



WH white

KT74BT



CHEF DESIGNS GARNISH CHEF COAT (IL) (LS) (HW) (M 12)

Black pearl buttons and black trim ◦ Left chest pocket ◦ Thermometer pocket on left sleeve ◦ Clean-finish vented cuffs ◦ Pre-shrunk with soil release finish ◦ 30" back length on size medium

65% Polyester / 35% Cotton Twill
Country of Origin: Imported

KT74 (Reg) S-3XL

COLOR: BT



BT white

0414WH



CHEF DESIGNS EIGHT KNOT BUTTON CHEF COAT (IL) (LS) (HW) (M 12)

Stand-up collar ◦ Double-breasted front ◦ Left chest pocket ◦ Clean-finish vented cuffs ◦ Pre-shrunk with soil release finish ◦ 30" back length on size medium

65% Polyester / 35% Cotton Twill
Country of Origin: Imported

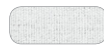
0411 WITHOUT THERMOMETER POCKET
(Reg) S-4XL, (Long) L-3XL

COLOR: WH

65% Polyester / 35% Cotton Twill
Country of Origin: Imported

0414 THERMOMETER POCKET ON LEFT SLEEVE
(Reg) S-3XL

COLOR: WH



WH white



KT76BK



CHEF DESIGNS BLACK CHEF COAT

IL LS HW M 12

Stand-up collar ◦ Left chest pocket ◦ Thermometer pocket on left sleeve ◦ Clean-finish vented cuffs ◦ 30" back length on size medium

65% Polyester / 35% Cotton Twill
Country of Origin: Imported

KT76 **EIGHT PEARL BUTTONS** (Reg) XS-5XL

COLOR: **BK**

100% Spun Polyester Twill
Country of Origin: Imported

0425 **TEN PEARL BUTTONS** (Reg) XS-5XL

0427 **TEN KNOT BUTTONS** (Reg) XS-5XL

COLOR: **BK**



BK black



Reference page 9 to see a customized option of KT76BK.





0403WH



CHEF DESIGNS EIGHT PEARL BUTTON CHEF COAT (IL) (LS) (HW) (M 12)

Stand-up collar ◦ Double-breasted front ◦ Non-yellowing UV buttons for long-lasting whiteness through industrial laundry processing ◦ Left chest pocket ◦ Clean-finish vented cuffs ◦ Pre-shrunk with soil release finish ◦ 30" back length on size medium

65% Polyester / 35% Cotton Twill
Country of Origin: Imported

0403 NO THERMOMETER POCKET
(Reg) XS-5XL, (Long) L-3XL

0413 THERMOMETER POCKET ON LEFT SLEEVE
(Reg) XS-5XL

COLOR: WH



WH white

0402WH



CHEF DESIGNS THREE-QUARTER SLEEVE CHEF COAT (IL) (LS) (HW) (M 12)

Stand-up collar ◦ Double breasted with eight pearl buttons ◦ Non-yellowing UV buttons for long-lasting whiteness through industrial laundry processing ◦ Left chest pocket ◦ Pre-shrunk with soil release finish ◦ 30" back length on size medium

65% Polyester / 35% Cotton Twill
Country of Origin: Imported

0402 (Reg) S-4XL

COLOR: WH



WH white



0404WH



CHEF DESIGNS HALF-SLEEVE CHEF COAT

IL LS HW M 12

Stand-up collar ◦ Double breasted with eight pearl buttons ◦ Non-yellowing UV buttons for long-lasting whiteness through industrial laundry processing ◦ Left chest pocket ◦ Pre-shrunk with soil release finish ◦ 30" back length on size medium

*65% Polyester / 35% Cotton Twill
Country of Origin: Imported*

0404 (Reg) S-4XL

COLOR: WH



WH white

4020WH



CHEF DESIGNS MILITARY BUSCOAT

IL LS HW M 12

Military collar ◦ Single breasted with four pearl buttons ◦ Non-yellowing UV buttons for long-lasting whiteness through industrial laundry processing ◦ Left chest pocket and two lower pockets ◦ Hemmed sleeves ◦ Pre-shrunk with soil release finish ◦ 30" back length on size medium

*65% Polyester / 35% Cotton Twill
Country of Origin: Imported*

4020 (Reg) XS-2XL

COLOR: WH



WH white





SP06WH

CHEF DESIGNS SNAPPY V-NECK CHEF SHIRT LS HW M 09

Three-gripper front closure • Thermometer pocket on left sleeve • Side vents • 28 3/4" back length on size medium

65% Polyester / 35% Cotton Poplin
Country of Origin: Imported

SP06 (Reg) S-3XL

COLOR: **WH**



WH white with white / black check



SP06WB

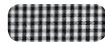
CHEF DESIGNS CHECK V-NECK CHEF SHIRT LS HW M 09

Black-and-white check pattern • One left chest pocket • Short sleeves • 30" back length on size medium

65% Polyester / 35% Cotton Poplin
Country of Origin: Imported

SP08 (Reg) S-3XL

COLOR: **WB**



WB white / black check



5035BK

CHEF DESIGNS LONG COOK SHIRT IL LS HW M 09

Six-gripper front • Pocketless • Squared bottom to tuck in or wear out • 30 1/2" back length on size medium

100% Spun Polyester Plain Weave
Country of Origin: Imported

5035 (Reg) XS-5XL

COLOR: **BK** (Plain Weave)
WH (Poplin)

65% Polyester / 35% Cotton Poplin
Country of Origin: Imported

5050 (Reg) S-4XL, (Long) L-3XL

COLOR: **WH**



BK black



WH white



5020WH



5020BK

CUSTOMIZATION • White - black / white check trim along front collar edge, logo embroidery on left upper chest, black bias on pocket top • Black - black / white check trim around collar edge, logo embroidery on left upper chest

5020WH



CHEF DESIGNS COOK SHIRT IL LS HW M 09

Five-gripper front • Left chest pocket • Squared bottom to tuck in or wear out • 28" back length on size medium

65% Polyester / 35% Cotton Poplin • Country of Origin: Imported

5020 GRIPPER FRONT

COLOR:

BK (Reg) S-4XL

WH (Reg) S-5XL

100% Spun Polyester Poplin • Country of Origin: Imported

5025 GRIPPER FRONT
(Reg) XS-5XL

COLOR: **WH**

80% Polyester / 20% Cotton Poplin • Country of Origin: Imported

5028 GRIPPER FRONT
(Reg) S-3XL

COLOR: **WH**



BK black



WH white





5010WH

CHEF DESIGNS BUTTON-FRONT COOK SHIRT

IL LS HW M 09

Left chest pocket ◦ Squared bottom to tuck in or wear out ◦ 28" back length on size medium

65% Polyester / 35% Cotton Poplin
Country of Origin: Imported

5010 (Reg) S-4XL

COLOR: WH



WH white



SP04WH

CHEF DESIGNS BLACK TRIM COOK SHIRT

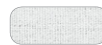
IL LS HW M 09

Black stand-up collar ◦ Five black buttons on front placket ◦ One left chest spade pocket ◦ Squared bottom to tuck in or wear out ◦ 28" back length on size medium

65% Polyester / 35% Cotton Poplin
Country of Origin: Imported

SP04 (Reg) S-3XL

COLOR: WH



WH white



PC54BK

CHEF DESIGNS 100% COTTON BAGGY CHEF PANT



Soft hand with wrinkle resistance ◦ Full-elastic waist with drawstring ◦ Two side seam pockets ◦ One back patch pocket ◦ Clean-finish hem ◦ 37" unfinished hem (sizes L, XL only)

100% Cotton Twill
Country of Origin: Imported

PC54 XS-3XL

COLOR: **BK, WB**



BK black



WB white / black check



PT55BW

CHEF DESIGNS BAGGY CHEF PANT WITH ZIPPER FLY



Full-elastic waist with drawstring ◦ Zipper fly ◦ Two side seam pockets ◦ One back patch pocket ◦ Pre-cure with soil release finish

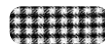
65% Polyester / 35% Cotton Twill
Country of Origin: Imported

PT55 XS-3XL

COLOR: **BK, BW**



BK black



BW black / white check



PS54CS

CHEF DESIGNS SPUN POLYESTER BAGGY CHEF PANT



Full-elastic waist with drawstring ◦ Two side seam pockets ◦ One back patch pocket ◦ Duraprint™ technology for superior colorfastness on PS54CK and PS54CS

100% Spun Polyester
Country of Origin: Imported

PS54 XS-5XL

COLOR: **BK** (6.5 oz. Piece-dyed Twill)
 CK, CS (7 oz. Plain weave Duraprint™)
 WB (5 oz. Plain weave Yarn-dye)



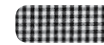
BK black



CK black / white check



CS chalk stripe



WB white / black check





5360BK

CHEF DESIGNS BAGGY CHEF PANT



Full-elastic waist with drawstring ◦ Two side seam pockets ◦ One back patch pocket ◦ Pre-cure with soil release finish

65% Polyester / 35% Cotton Twill
Country of Origin: Imported

5360 XS-3XL

COLOR: BK, BW



BK black BW black / white check



PS64WB

CHEF DESIGNS SPUN POLYESTER CHECKED COOK PANT



Snap closure and zipper fly ◦ Side-elastic waist ◦ Two front slant pockets ◦ Two patch hip pockets

100% Spun Polyester Plain Weave
Country of Origin: Imported

PS64 28-48

COLOR: WB



WB white / black check



2020WH

CHEF DESIGNS COOK PANT



Side-elastic waistband ◦ Brass zipper and snap closure ◦ Two front slant pockets ◦ Two patch hip pockets

65% Polyester / 35% Cotton Poplin
Country of Origin: Imported

2030 30-50

COLOR: BW (varn-dye check)

65% Polyester / 35% Cotton Twill
Country of Origin: Imported

2020 28-54

COLOR: BW (printed check)

2020 30-46

COLOR: BK, WH



BK black BW black / white check WH white



HP60WH

CHEF DESIGNS CHEF HAT (LS) (HW) (M 21)

Adjustable hook-and-loop closure

80% Polyester / 20% Cotton Poplin
Country of Origin: Imported

HP60 One size fits all

COLOR: **BB, BK, RD, WH**



BB white with black band



BK black



RD red



WH white



HP70BK

CHEF DESIGNS SKULL CAP (HW) (M 22)

Elastic back

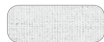
65% Polyester / 35% Cotton Twill
Country of Origin: Imported

HP70 (M) 23" / (L) 25"

COLOR: **BK, WH**



BK black



WH white



HT56BB

CHEF DESIGNS CHEF BALL CAP (HW)

Adjustable back tab • Sewn-in moisture barrier • Eyelet ventilation

100% Cotton Twill
Country of Origin: Imported

HT56 One size fits all

COLOR: **BB**



BB black / white check with black bill



NP12RB

CHEF DESIGNS NECKERCHIEF (LS) (HW)

20" x 40" triangle

80% Polyester / 20% Cotton Plain Weave
Country of Origin: Imported

NP12 One size fits all

COLOR: **BK, RB, RD**

65% Polyester / 35% Cotton Poplin
Country of Origin: Imported

NP12 One size fits all

COLOR: **WH**



BK black



RB royal blue



RD red



WH white





TT30HG

CHEF DESIGNS PREMIUM BIB APRON

IL LS HW

Adjustable neck strap with plastic buckle ◦ Two-section pocket ◦ Soil release ◦ 24" W x 34" L

65% Polyester / 35% Cotton Twill
Country of Origin: Imported

TT30 One size fits all
COLOR: BK, HG, NV, RB, WH



TT32BR

CHEF DESIGNS PREMIUM SHORT BIB APRON

IL LS HW

Adjustable neck strap with plastic buckle ◦ Three-section pocket ◦ 28" W x 24" L

65% Polyester / 35% Cotton Twill
Country of Origin: Imported

TT32 One size fits all
COLOR: BK, BR, HG, NV



1430RD

CHEF DESIGNS STANDARD BIB APRON

IL LS HW

Strong tubular braid ties ◦ Soil release finish ◦ 1751 has pencil pocket on chest

65% Polyester / 35% Cotton Twill
Country of Origin: Imported

1751 30" W x 33" L (One size fits all)

COLOR: BK, WH

65% Polyester / 35% Cotton Twill
Country of Origin: Imported

1430 30" W x 33" L (One size fits all)

COLOR: BK, DR, HG, NV, RB, RD, WH

100% Spun Polyester
Country of Origin: Imported

2500 27" W x 31" L (One size fits all)

COLOR: BK (Twill)
WH (Plain Weave)





TT38BK



CHEF DESIGNS TUXEDO APRON

IL LS HW

Adjustable strap closure ◦ Center-divided patch pocket ◦ Soil release finish ◦ 28" W x 32" L

65% Polyester / 35% Cotton Twill
Country of Origin: Imported

TT38 One size fits all

COLOR: BK



BK black

TT34WH



CHEF DESIGNS BISTRO APRON

IL LS HW

Extra long ties across top of apron ◦ Large rectangular pocket with pencil divider ◦ Wrinkle-resistant cotton ◦ 28" W x 32" L

65% Polyester / 35% Cotton Twill
Country of Origin: Imported

TT34 One size fits all

COLOR: BK, WH

100% Cotton Twill
Country of Origin: Imported

TC34 One size fits all
(Homewash only)

COLOR: WB



BK black



WB chalk stripe



WH white

2134WH



CHEF DESIGNS BAR APRON

IL LS HW

Basic styling ◦ Tubular braid ties ◦ Pocketless ◦ 29" W x 32" L

65% Polyester / 35% Cotton Twill
Country of Origin: Imported

2134 One size fits all

COLOR: WH



WH white



1790WH



CHEF DESIGNS 4-WAY BAR APRON

(IL) (LS) (HW)

Tubular braid ties ◦ Pocketless ◦
29" W x 32" L

65% Polyester / 35% Cotton Twill
Country of Origin: Imported

1790 One size fits all

COLOR: **WH**



WH white

TT46NV



CHEF DESIGNS WAIST APRON

(IL) (LS) (HW)

Three-section front pocket ◦ Self ties ◦
23" W x 11" L with squared corners

65% Polyester / 35% Cotton Twill
Country of Origin: Imported

TT46 One size fits all

COLOR: **BK, NV, WH**



BK black



NV navy



WH white



TT36BK



CHEF DESIGNS HALF APRON

IL LS HW

Three-section pouch pocket • Self ties • 20" W x 13" L with rounded corners

65% Polyester / 35% Cotton Twill
Country of Origin: Imported

TT36 One size fits all

COLOR: BK



BK black

TP61LB



CHEF DESIGNS COBBLER APRON

IL LS HW M 67

Adjustable side ties • Split-pouch pocket • 26 1/2" back length on size medium

80% Polyester / 20% Cotton Poplin
Country of Origin: Imported

TP61 M, L

COLOR: BK, KG, LB, NV, RB, RD, TN



BK black



KG kelly green



LB light blue



NV navy



RB royal blue



RD red



TN tan

1360NV



CHEF DESIGNS BUTTON-FRONT VEST

IL LS HW M 30

Four-button front • Chest pocket • Two lower front pockets • 23" back length on size medium

65% Polyester / 35% Cotton Twill
Country of Origin: Imported

1360 (Reg) S-3XL

COLOR: BK, NV, RB, RD



BK black



NV navy



RB royal blue



RD red