



DONE RIGHT.®

2015 workwear catalog

DONE



RIGHT.®



MORE THAN JUST A SLOGAN. IT'S A WAY OF LIFE.



Here's to the early risers. The heavy lifters. The people who believe there's only one way a job should be done – and that's DONE RIGHT. We've been outfitting these hard workers since 1923 in everything from shirts, pants and overalls to lab coats and butcher wraps.

TODAY, WE OUTFIT MORE THAN 16 MILLION WORKERS, AND WE'RE JUST GETTING STARTED.

So, here's to the people who do the tough jobs. The challenging jobs. The messy jobs. The bending, twisting jobs. The jobs that make you think on your feet. And yes, they can be the fun jobs – at least for those of us who take great pride in our work and pride in the people we work alongside. We make Red Kap for all of you. And we'll continue, for as long as there are people who never quit, who go to work before the sun comes up and head home for dinner long after the sun's gone down.



ICON GUIDE

Use the below legend as a guide to help quickly identify unique features and benefits for Red Kap® garments after each product name.



WOMEN'S COMPANION PIECE AVAILABLE

Garments on pages 12-61 featuring this icon have a female companion piece located in the Women's Workwear section on pages 86-97.



TOUCHTEX™ TECHNOLOGY

Superior color retention, soil release and wickability.



TOUCHTEX PRO™

Same features as Touchtex but with an even softer hand. Available on bottoms only.



YARN DYED STRIPES

Yarns are dyed then woven into a striped configuration.



DURABLE PRESS

Minimum pressing or ironing required. Fabric contains a wrinkle-resistant finish.



NO BUTTONS

This garment has no buttons that will fall off or catch.



UV BUTTONS

Non-yellowing buttons for long-lasting whiteness through industrial laundry processing.



HYDROPHYLIC MOISTURE MANAGEMENT SYSTEM

Technical term meaning moisture wicking. Wicks perspiration away from the skin and spreads it over the fabric face. It then quickly evaporates, allowing the wearer to stay cool, dry and comfortable.



ROKAP

A Red Kap® term for our no-roll waistband. This garment has enhanced engineering to withstand industrial laundry stress and abrasion. The waistband has a mesh inner lining inside to reduce breakdown in fabric fibers, giving the pant a permanent crease even after industrial laundering.



WORK NMOTION® FABRIC

Created exclusively for Red Kap® and provides permanent comfort during wear with memory stretch yarns for added flexibility.



NO-SCRATCH APPAREL

Paint jobs stay scratch free thanks to strategically-designed garment features that keep buttons and snaps under wraps.



STRETCH CANVAS

The industry's first Industrial Stretch Canvas is extra tough but wears comfortably all day long.



TRUBLACK

Our 65% Polyester / 35% Cotton Black fabric resists fading wash after wash.



CLASSIC FIT

This fit features a traditional rise that sits at the natural waist. Slim through the seat and thigh with a slimmer leg opening that will fit over work boots.



RELAXED FIT

Our relaxed fit jeans feature a traditional rise that sits at the natural waist. Relaxed seat and thigh offer more room for mobility, and the slightly tapered leg fits over work boots.



LOOSE FIT

This fit features an updated rise that sits slightly below the waist. It is cut through the seat and thigh to offer maximum comfort and ease of movement. The straight leg fits over work boots.



DUNGAREE FIT

Our dungarees feature a loose fit with an updated rise that sits slightly below the natural waist. They are full cut through seat and thigh for maximum comfort and ease of movement. Straight leg fits over work boots.



STRAIGHT FIT

Our Women's Straight Fit features an updated rise that sits slightly below the waist. It is slim through the seat and thigh with a leg opening that fits over work boots.



HI-VISIBILITY CLASS 2 LEVEL 2

Intended for use in activities where greater visibility is necessary during inclement weather conditions or in work environments with risks that exceed those for Class 1. These garments also cover workers who perform tasks that divert their attention from approaching traffic or that put them in close proximity to passing vehicles traveling at 25 mph or higher.



HI-VISIBILITY CLASS 3 LEVEL 2

Provides the highest level of visibility and are intended for workers who face serious hazards, such as nighttime work, and often have high task loads that divert attention away from approaching vehicle traffic. Garments for these workers provide enhanced visibility to more of the body, such as arms and legs.



HI-VISIBILITY CLASS E LEVEL 2

Waistband trousers, bib overalls and shorts that meet all minimum requirements for retro-reflective and background materials, except for minimum area and placement required for Performance Class 3, 2 or 1. Class E apparel is not intended to be worn without Performance Class 2 or 3 apparel. When Class E trousers are worn with Performance Class 2 or Class 3 apparel, the overall classification for the ensemble is Performance Class 3.



UPF 40 RATING

Ultraviolet Protection Factor - A rating designed for fabric and clothing that specifically measures the level of sun protection. UPF measures both UVA and UVB rays.

FIT CHART ICONS



MEN'S FIT CHART (MFC)

The "M" represents "Men's" and is followed by the corresponding number of the specific Men's Fit Chart on pgs. 185-188.



WOMEN'S FIT CHART (LFC)

The "L" represents "Ladies" and is followed by the corresponding number of the specific Women's Fit Chart on pg. 184.

WASH CODES



INDUSTRIAL LAUNDRY



LIGHT SOIL WASH



HOME WASH



DRY CLEAN

CONTENTS

Icon Guide	4-5
Red Kap Product Features & Benefits	6-7
Customization	8-9
Shirts	10-39
Pants	40-61
Outerwear	62-71
Coverings	72-75
Coveralls	76-83
Women's	84-97
Automotive	98-111
Hi-Visibility	112-121
Enhanced Visibility	122-131
Housekeeping	132-143
Healthcare	144-149
Food Processing	150-157
Culinary	158-177
Services	178-181
Measuring Guidelines	182-183
Size Charts	184-188
Legal	189
Index / Size Chart Reference	190-191



ICON GUIDE BOOKMARK

Use the handy bookmark included in the catalog to easily identify icons used for each product.





PRODUCT FEATURES

It's more than just hard-working workwear. Our Red Kap® workwear collection is designed for the work you do everyday. Stronger seams. More durable fabrics. Pockets in just the right places. With so many features that help you get the job done, our workwear definitely has what it takes.

SewStrong

Bartacks with angled stitching take the strain to prevent rips.

Hex Pocket

Corner-free pockets resist dirt and lint buildup. Added bartacks provide extra strength to prevent rips.



CREW SHIRT - SY20BR
shown on page 16 and 100

SmartPlacket

Buttons stay neatly hidden for a smooth look. Plackets also allow for custom embroidery application.

Versa Hem

A straight bottom hem offers a versatile fit with maximum comfort and style. Whether it's a tucked in or tucked out kind of day.



TOUCHTEX™ TECHNOLOGY
SUPERIOR WICKABILITY

Red Kap's advanced Touchtex™ fabric actually pulls moisture away from the body, helping it to evaporate more quickly.

TESTED RIGHT. DONE RIGHT.



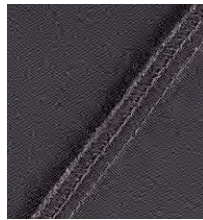
Every Red Kap garment must pass rigorous testing for proof of excellence in design, engineering and construction. That's the Done Right guarantee.



RoKap
No-roll waistband is designed to lie flat and hold its shape.



Triple Grip System
Brass ratcheting zipper securely locks in place while strategically placed bartacks provide extra strength.



DuraSeams
Double-stitched seams provide maximum strength and durability.

DURA-KAP® INDUSTRIAL PANT - PT20BK shown on page 42

FABRIC THAT WORKS (FOR YOU)

We offer a wide variety of high-quality, durable fabrics made to withstand the wear and tear endured on any jobsite. Whether you're looking for added comfort, durability or a little bit of both, we've got the fabric that suits your needs. And it's Red Kap, so you know it's Done Right.

65% POLYESTER / 35% COTTON 80% POLYESTER / 20% COTTON

- Poly-rich fibers deter dust and debris
- Breathability and comfort of cotton
- Strength and durability of polyester
- Lightweight for comfort
- Provides excellent color retention

100% COTTON

- All natural fibers offer breathability
- Twill weave adds strength
- Easy care, wrinkle-resistant finish
- Lightweight for comfort
- Soft hand and easy drape on the body

100% SPUN POLYESTER

- Strong fibers that stand up to wear and tear
- Fibers have more "give" than natural fibers, offering more comfort and mobility
- Provides excellent color retention
- Processes faster through all wash cycles
- Fibers deter dust and debris

ANTI-STAT

- Low lint fabric
- Lightweight fabric with roomier fit for added comfort on the job
- Grippers at sleeves and at neck for extra coverage when needed
- External chest and hip pockets for additional storage

WORK NMOTION®

- Memory Stretch yarns for added flexibility
- Inherent stretch adds additional comfort
- Excellent stretch recovery at stress points (elbows and knees)
- Bartacks at all stretch points for added durability







pants





NV navy

SG spruce green

BN brown

KH khaki

BK TruBlack

WH white

CH charcoal



PT20NV

DURA-KAP® INDUSTRIAL PANT



TOUCHTEX PRO™ with superior color retention and soil release • Traditional easy fit • Folder-set waistband with outlet and button closure for a comfortable fit • Slack-style front pockets and two set-in hip pockets; left pocket has button closure • TruBlack fabric resists fading • Women's companion (PT21) shown on page 93

7.5 oz. Twill, 65% Polyester / 35% Cotton
Country of Origin: Imported

PT20 28-60

COLOR: BK, BN, CH, KH, NV, SG, WH



PT22BK

MEN'S MODERN FIT INDUSTRIAL PANT



TOUCHTEX PRO™ with superior color retention and soil release ◦ Folder-set interior waistband with button and single hook-and-eye closure ◦ No exterior buttons ◦ Slack-style front pockets and two set-in hip pockets ◦ TruBlack fabric resists fading

7.5 oz. Twill, 65% Polyester / 35% Cotton
Country of Origin: Imported

PT22 28-46

COLOR: **BK, NV**



BK TruBlack



NV navy



PT10CH

RED-E-PREST® WORK PANT



TOUCHTEX PRO™ with superior color retention and soil release ◦ Easy fit ◦ No-roll waistband that maintains a crease and withstands abrasion through industrial laundry processing ◦ Two front pockets and two set-in hip pockets; left pocket has button closure ◦ TruBlack fabric resists fading

7.5 oz. Twill, 65% Polyester / 35% Cotton
Country of Origin: Imported

PT10 26-62

COLOR: **BK, BN, CH, GY, NV, PB, RB, SG, TN, WH**



BK TruBlack



BN brown



CH charcoal



GY grey



NV navy



PB postman blue



RB royal blue



SG spruce green



TN tan



WH white



PT60SG

ELASTIC INSERT WORK PANT



TOUCHTEX PRO™ with superior color retention and soil release ◦ Bend, stretch and twist in complete comfort ◦ Easy fit ◦ Self-fabric waistband with side elastic waist inserts ◦ Two front pockets and two set-in hip pockets; left pocket has button closure ◦ TruBlack fabric resists fading ◦ Women's companion (PT61) shown on page 93

7.5 oz. Twill, 65% Polyester / 35% Cotton
Country of Origin: Imported

PT60 27/28 - 57/58

COLOR: BK, BN, CH, KH, NV, SG, TN, WH



PT50CB

JEAN-CUT PANT

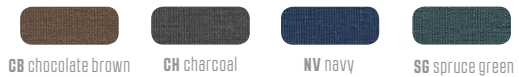


TOUCHTEX PRO™ with superior color retention and soil release ◦ Soft-hand twill ◦ No-roll waistband that maintains a crease and withstands abrasion through industrial laundry processing ◦ Frontier-style front pockets and patch hip pockets ◦ Slightly tapered leg ◦ Double-needle felled seam riser

7.5 oz. Twill, 65% Polyester / 35% Cotton
Country of Origin: Imported

PT50 28-50

COLOR: CB, CH, NV, SG





PT62NV

UTILITY UNIFORM PANT



Full cut, straight-leg styling ◦ Folder-set waistband with outlet and extra wide belt loops and hook-and-eye closure ◦ Slack-style front pockets and two set-in hip pockets; left pocket has button closure ◦ TruBlack fabric resists fading ◦ Pairs well with ST52 and ST62 Utility Uniform Shirts on page 23

8.5 oz. Twill, 65% Polyester / 35% Cotton
Country of Origin: Imported

PT62 28-56

COLOR: **BK, CH, KH, NV**



BK black

CH charcoal

KH khaki

NV navy



PT32KH

PLEATED WORK PANT



TOUCHTEX PRO™ with superior color retention and soil release ◦ Classic silhouette with double front pleats ◦ Folder-set waistband with outlet and button closure ◦ Slack-style front pockets and set-in hip pockets; left pocket has button closure ◦ TruBlack fabric resists fading

7.5 oz. Twill, 65% Polyester / 35% Cotton
Country of Origin: Imported

PT32 28-52

COLOR: **BK, CH, KH, NV**



BK TruBlack

CH charcoal

KH khaki

NV navy



PT38BK

PLEATED TWILL PANT



TOUCHTEX PRO™ with superior color retention and soil release ◦ A tailored classic ◦ Relaxed fit with straight-leg styling ◦ Hook-and-eye closure ◦ Double front pleats ◦ Two slack-style front pockets and two set-in hip pockets; left pocket has button closure ◦ TruBlack fabric resists fading ◦ Women's companion (PT39) shown on page 94

7.5 oz. Twill, 65% Polyester / 35% Cotton
Country of Origin: Imported

PT38 28-52

COLOR: BK, CH, KH, NV



PT88CH

INDUSTRIAL CARGO PANT



TOUCHTEX PRO™ with superior color retention and soil release ◦ Updated utility-style cargo pants offer an easy fit ◦ Slack-style front pockets and two set-in hip pockets; left pocket has button closure ◦ Two bellow cargo pockets with pocket flaps and snap closures ◦ TruBlack fabric resists fading ◦ Women's companion (PT89) on page 96

7.5 oz. Twill, 65% Polyester / 35% Cotton
Country of Origin: Imported

PT88 30-50

COLOR: BK, CH, KH, NV





PT2ANV

PERFORMANCE SHOP PANT



The first IL-friendly true stretch fabric ◦ Touchtex™ technology with superior color retention and soil release ◦ Relaxed, modern fit that combines the durability of a work pant with the comfort of a jean ◦ Double-needle stitching ◦ Concealed, no-scratch waistband button ◦ Invisible stretch waistband expands up to three additional inches ◦ Wide, reinforced belt loops ◦ Reinforced, deep front pocket bags ◦ Two jean-style front pockets, two oversized hip pockets, no-scratch cargo pocket on left leg and unique double-pocket design on right leg ◦ Reinforced knees with strategically placed darts ◦ Full inseam gusset ◦ Relaxed cut leg fits easily over work boots ◦ Patent pending ◦ Shop Short (PT4A) with similar features on page 55

8 oz. Twill, 54% Polyester / 42% Cotton / 4% Spandex
Country of Origin: Imported

PT2A 30-50
COLOR: BK, CH, NV



stretch canvas fabric detail



PT2CKH

CELL PHONE POCKET PANT



TOUCHTEX PRO™ with superior color retention and soil release ◦ Traditional easy fit ◦ Folder-set waistband with outlet and button closure for a comfortable fit ◦ Slack-style front pockets and two set-in hip pockets; left pocket has button closure ◦ Specially-designed pocket with concealed closure on side seam for easy access and comfort ◦ TruBlack fabric resists fading

7.5 oz. Twill, 65% Polyester / 35% Cotton
Country of Origin: Imported

PT2C 28-50

COLOR: BK, CH, KH, NV



PC10NV

COTTON WORK PANT

IL LS HW

Easy fit • Folder-set waistband with outlet and button closure • Slack-style front pockets and two set-in hip pockets; left pocket has button closure

8.5 oz. Twill, 100% Pre-shrunk Cotton
Country of Origin: Imported

PC10 28-56
COLOR: **CH, NV, SG**



CH charcoal NV navy SG spruce green



PC20GG

WRINKLE-RESISTANT COTTON WORK PANT IL LS HW 

Easy fit • Folder-set waistband with outlet and button closure • Slack-style front pockets and two set-in hip pockets; left pocket has button closure

8.5 oz. Twill, 100% Wrinkle-resistant Cotton
Country of Origin: Imported

PC20 28-56
COLOR: **BN, CH, DN, GG, KH, NV, PB, SG**



BN brown CH charcoal DN dark navy GG graphite grey
KH khaki NV navy PB postman blue SG spruce green



PC46NV

PLEATED FRONT COTTON PANT



Premium soft-hand cotton ◦ Double front pleats ◦ Two slack-style front pockets and two set-in hip pockets; left pocket has button closure

7.5 oz. Twill, 100% Cotton with Mechanical Stretch
Country of Origin: Imported

PC46 28-50

COLOR: BK, KH, NV



BK black

KH khaki

NV navy



PC44BK

PLAIN FRONT COTTON PANT



Premium soft-hand cotton ◦ Two slack-style front pockets and two set-in hip pockets; left pocket has button closure ◦ Women's companion (PC45) shown on page 96

7.5 oz. Twill, 100% Cotton with Mechanical Stretch
Country of Origin: Imported

PC44 28-50

COLOR: BK, KH, NV



BK black

KH khaki

NV navy



PC76KH

COTTON CARGO PANT



Relaxed fit ◦ Jean-style waistband with button closure ◦ Slack-style front pockets and back patch pockets with flaps and snap closures ◦ Two bellow cargo pockets with pocket flaps and snap closures

8.5 oz. Twill, 100% Wrinkle-resistant Cotton
Country of Origin: Imported

PC76 30-50

COLOR: KH, NV



KH khaki

NV navy



PS56WH



PZ20NV



PC80WH

SPECIALIZED WORK PANT



TOUCHTEX PRO™ with superior color retention and soil release ◦ Folder-set waistband with outlet and hook-and-eye closure ◦ Slack-style front pockets and two set-in hip pockets ◦ No buttons on garment

7.5 oz. Twill, 65% Polyester / 35% Cotton
Country of Origin: Imported

PT56 30-42

COLOR: WH

7.5 oz. 100% Spun Polyester
Country of Origin: Imported

PS56 30-44

COLOR: WH



WH white

WORK NMOTION® PANT



Fabric created exclusively for Red Kap® ◦ Technologically-crafted polyester for permanent comfort wear ◦ Memory stretch yarns for flexibility ◦ Easy fit with straight leg ◦ Folder-set waistband with outlet and button closure for a comfortable fit ◦ Two front pockets and two set-in hip pockets; left pocket has button closure ◦ Women's companion (PZ33) shown on page 95

7.75 oz. Stretch Twill,
80% Polyester / 20% Cotton
Country of Origin: Imported

PZ20 28-52

COLOR: BK, NV



BK black



NV navy

PAINTER PANT



Traditional painter's drill fabric ◦ Loose dungaree fit ◦ Straight leg fits over the top of work boots ◦ Two deep, scoop-front pockets and two oversized hip pockets ◦ Double rule pocket on right leg, hammer loop on left leg ◦ Bartacks at stress points ◦ Red Kap brand label on rule pocket

9 oz. Painter Drill, 100% Cotton
Country of Origin: Imported

PC80 32-42

COLOR: WH



WH white





PT42KH

PLAIN FRONT SIDE ELASTIC SHORT IL LS HW PRO TRU BLACK

TOUCHTEX PRO™ with superior color retention and soil release ◦ Self-fabric waistband with side elastic inserts ◦ Two slack-style front pockets and two set-in hip pockets; left pocket has button closure ◦ 10" inseam

7.5 oz. Twill, 65% Polyester / 35% Cotton
Country of Origin: Imported

PT42 29/30 - 45/46

COLOR: CH, KH, NV



CH charcoal

KH khaki

NV navy



PT26BK

PLAIN FRONT SHORT W IL LS HW PRO TRU BLACK

TOUCHTEX PRO™ with superior color retention and soil release ◦ Jean style waistband with button closure on PC26 ◦ Two slack-style front pockets and set-in hip pockets with button closure at left hip pocket ◦ 10" inseam ◦ TruBlack fabric resists fading ◦ Women's companion (PT27) shown on page 97

8.5 oz. Twill, 100% Wrinkle-resistant Cotton ◦ Country of Origin: Imported

PC26 28-50

COLOR: KH, NV

7.5 oz. Twill, 65% Polyester / 35% Cotton ◦ Country of Origin: Imported

PT26 28-50

COLOR: BK, BN, CH, NV, SG, TN



BK TruBlack

BN brown

CH charcoal

KH khaki

NV navy

SG spruce green

TN tan



PT34CH

PLEATED FRONT SHORT IL LS HW PRO TRU BLACK

TOUCHTEX PRO™ with superior color retention and soil release ◦ Folder-set waistband with outlet and button closure ◦ Double front pleats ◦ Two slack-style front pockets and set-in hip pockets; left pocket has button closure ◦ TruBlack fabric resists fading

7.5 oz. Twill, 65% Polyester / 35% Cotton
Country of Origin: Imported

PT34 30-50

COLOR: BK, CH, KH, NV



BK TruBlack

CH charcoal

KH khaki

NV navy



PT66NV

CARGO SHORT



TOUCHTEX PRO™ with superior color retention and soil release ◦ Relaxed fit ◦ Slack-style front pockets ◦ Back patch pockets with flaps and snap closures ◦ Side bellow cargo pockets with flaps and snap closures ◦ 12" inseam ◦ TruBlack fabric resists fading

7.5 oz. Twill, 65% Polyester / 35% Cotton
Country of Origin: Imported

PT66 30-50

COLOR: **BK, KH, NV**



PC86NV

COTTON CARGO SHORT



Relaxed fit in wrinkle-resistant cotton ◦ Two slack-style front pockets and back patch pockets with flaps and snap closures ◦ Two bellow cargo pockets with pocket flaps and snap closures ◦ 12" inseam

8.5 oz. Twill, 100% Wrinkle-resistant Cotton
Country of Origin: Imported

PC86 30-50

COLOR: **KH, NV**



KH khaki

NV navy



PT4CKH

CELL PHONE POCKET SHORT



TOUCHTEX PRO™ with superior color retention and soil release ◦ Soft-hand twill ◦ Folder-set waistband with outlet and button closure ◦ Two slack-style front pockets and two set-in hip pockets; left pocket has button closure ◦ Specially-designed pocket with concealed closure placed on side seam for easy access and comfort ◦ 12" inseam ◦ TruBlack fabric resists fading

7.5 oz. Twill, 65% Polyester / 35% Cotton
Country of Origin: Imported

PT4C 28-50

COLOR: **BK, CH, KH, NV**



BK TruBlack

CH charcoal

KH khaki

NV navy



**PATENT
PENDING**

PT4ACH

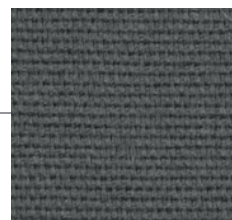
PERFORMANCE SHOP SHORT



The first IL-friendly true stretch fabric ◦ Touchtex™ technology with superior color retention and soil release ◦ Relaxed, modern fit that combines the durability of a work pant with the comfort of a jean ◦ Double-needle stitching ◦ Concealed, no-scratch waistband button ◦ Invisible stretch waistband expands up to 3 additional inches ◦ Wide, reinforced belt loops ◦ Reinforced, deep front pocket bags ◦ Two jean-style front pockets, two oversized hip pockets, no-scratch cargo pocket on left leg and unique double-pocket design on right leg ◦ Patent pending ◦ Shop Pant (PT2A) with similar features shown on page 47

8 oz. Twill, 54% Polyester / 42% Cotton / 4% Spandex
 Country of Origin: Imported

PT4A 30-50
COLOR: **BK, CH, NV**



stretch canvas fabric detail



PD500W

CLASSIC FIT JEAN



Classic fit with traditional rise sits at the natural waist ◦ Slim through the seat and thigh ◦ Slimmer leg opening that fits over work boots ◦ Deep front pockets ◦ Antique brass rivets ◦ Decorative stitching on back pockets ◦ Leatherette logo patch on back pocket

13.75 oz. Heavyweight Denim, 100% Cotton
Country of Origin: Imported

PD50 28-50

COLOR: DW



DW dark stonewash



PD54PW

CLASSIC WORK JEAN



Classic fit with traditional rise sits at the natural waist ◦ Slim through the seat and thigh ◦ Slimmer leg opening that fits over work boots ◦ Leatherette logo patch on back pocket ◦ No rivets

13.75 oz. Heavyweight Denim, 100% Cotton
Country of Origin: Imported

PD54 28-54

COLOR: PW



PW prewashed indigo



PD52DN

CLASSIC RIGID JEAN



Tough denim for strength and wearability ◦ Classic fit with traditional rise sits at the natural waist ◦ Slim through the seat and thigh ◦ Slimmer leg opening that fits over work boots ◦ Leatherette logo patch on back pocket ◦ No rivets

13.75 oz. Heavyweight Denim, 100% Cotton
Country of Origin: Imported

PD52 29-50

COLOR: DN



DN denim



PD60PW

RELAXED FIT JEAN



Relaxed fit with traditional rise sits at the natural waist ◦ Relaxed seat and thigh ◦ Slightly tapered leg fits over work boots ◦ Deep front pockets ◦ Antique brass rivets ◦ Decorative stitching on back pocket ◦ Leatherette logo patch on back pocket

13.75 oz. Heavyweight Denim, 100% Cotton
Country of Origin: Imported

PD60 (BW) 28-52, (PW) 28-54,
(SW) 28-50

COLOR: **BW, PW, SW**





PD40PW

RELAXED ESSENTIAL JEAN

IL LS HW R

Prewashed fabric for added comfort ◦ Relaxed fit with traditional rise sits at the natural waist ◦ Relaxed seat and thigh ◦ Deep front pockets ◦ No rivets ◦ Slightly tapered leg fits over work boots

13.75 oz. Denim, 100% Cotton

Country of Origin: Imported

PD40 30-50

COLOR: PW



PW prewashed indigo



W976DS

WRANGLER HERO® 5-STAR RELAXED FIT JEAN

HW R

Heavyweight cotton denim ◦ Classic five-pocket styling ◦ Plenty of room in the seat and thigh ◦ Deep front pockets ◦ Rivets at front pocket

13.75 oz. Heavyweight Denim, 100% Cotton

Country of Origin: Imported

W976 32-46,

30"-34" INSEAM

COLOR: DS



DS prewashed denim



PD80PW

LOOSE FIT DUNGAREE

IL LS HW D

Loose fit with updated rise sits slightly below the natural waist ◦ Full cut through the seat and thigh ◦ Straight leg fits over the top of work boots ◦ Two deep, scoop-front pockets and two oversized hip pockets ◦ Double rule pocket on right leg, hammer loop on left leg ◦ Bartacks at stress points ◦ Decorative stitching on back pockets ◦ Leatherette logo patch on back pocket

13.75 oz. Heavyweight Denim, 100% Cotton
Country of Origin: Imported

PD80 28-50

COLOR: PW, SW



PW prewashed

SW stonewash



PD70DW

LOOSE FIT JEAN

IL LS HW **L**

Loose fit with updated rise sits slightly below the natural waist ◦ Full cut through the seat and thigh ◦ Straight leg fits over the top of work boots ◦ Deep front pockets ◦ Antique brass rivets ◦ Decorative stitching on back pockets ◦ Leatherette logo patch on back pocket

13.75 oz. Heavyweight Denim, 100% Cotton

Country of Origin: Imported

PD70 28-50

COLOR: DW



DW dark stonewash



PD30BD

DUCK DUNGAREE

IL LS HW **D**

Extra strength and color retention ◦ Loose fit sits slightly below the natural waist ◦ Two deep, scoop-front pockets and large patch hip pockets ◦ Rule pocket on right leg, hammer loop on left leg ◦ Extra utility loop ◦ Bartacks at stress points ◦ Leatherette logo patch on back pocket

10 oz. Duck, 65% Polyester / 35% Cotton

Country of Origin: Imported

PD30 28-50

COLOR: BD, ND



BD brown duck



ND navy duck

AB12BK



NO-SCRATCH LEATHER BELT 

No-scratch buckle • Unisex

100% Leather

Country of Origin: Imported

AB12BK S-XL

COLOR: **BK**



BK black

AB14BK



WEBBED ADJUSTABLE BELT 

Webbed adjustable • Leather closure with hook-and-loop, no-scratch buckle • Unisex

100% Nylon

Country of Origin: Imported

AB14BK M-L

COLOR: **BK**



BK black



HB20RD

COTTON BALL KAP

Medium profile styling • Self fabric back belt

100% Cotton Twill

Country of Origin: Imported

HB20 One size fits all

COLOR: **BK, NV, RD**



BK black



NV navy



RD red

