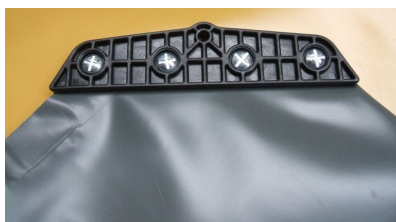




Fuel Bladder Tanks

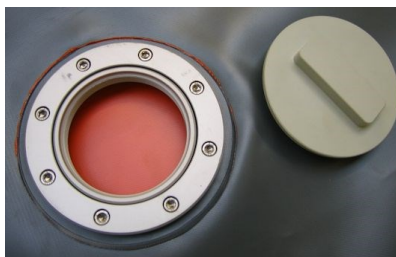
These fuel bladder tanks have been developed especially for the harsh emergency aid environment and are supplied with special outlets, valves and vents to suit use with diesel



Reinforced corner mouldings and integral tie down holes

The tanks can be unrolled and used on any area of flat ground that has been cleared of debris.

- Suitable for ALL climates
- Installed by 2 people in around 15 minutes
- Fast deployed storage for local fuels
- All tanks supplied packed in an ISPM15 heat treated plywood case suitable for export and includes all necessary tools, instruction manual and repair kit
- All tanks can be supplied as kits with low voltage electric fuel transfer pumps, flow meters and pipework
- Special sizes and outlet configurations made to order



2" BSP Outlet and plug



Flow meter & Fuel transfer pump

Bund Liners

Bund liners are produced in fully fuel resistant materials to act as secondary containment lining. Bund liners are supplied large enough to line a bund to the height of the filled bladder



BUTYL PRODUCTS LIMITED

11 Radford Crescent, Billericay, Essex, CM12 0DW, England
Telephone: +44 (0)1277 653 281 Fax: +44 (0)1277 657 921
Email: enquiries@butylproducts.co.uk
Website: www.butylproducts.co.uk Skype: butyl.office

Technical Data



Bladder Construction

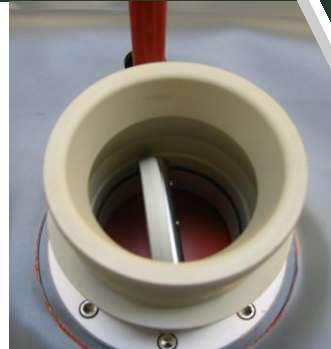
All bladders are supplied with reinforced corner mouldings and with integral tie-down holes

Bladder Fittings

One 2.5" BSP(F) Outlet is fitted to the top centre of the bladder, this is fitted with a mushroom vent or flame tube when filling, or a plug for long term storage.

Two 2" BSP(F) Outlets are fitted to one side of the bladder, one is fitted with a plug and the other is fitted with a 2" V50 butterfly valve giving a 2" BSP(F) outlet.

Larger bladders (60,000 litre +) are fitted with two 4" Top caps with covers.



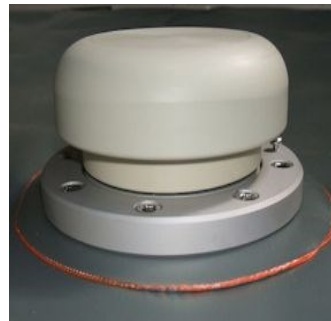
2" Outlet with V50 butterfly valve

Groundsheets

Produced approximately 1m larger than the bladder tank dimensions when empty. All groundsheet are fitted with moulded-in edge eyelets for pegging down if required.

Bladder Material

- Material thickness: 1.30 +/- 0.1mm
- Material weight: 1.27 +/- 0.1kg/m²
- Coating: PUR 0.4mm
- Base cloth 940 Dtex 1 ply polyamide
- Tear strength: >80N
- Elongation at break: Warp 15% Weft 20%
- Tensile strength at break: 3500 N/5cm
- Adhesion: >250N/5cm
- Temperature resistance: -32°C to +65°C
- Puncture: >125N



Mushroom vent

Capacity (L)	Tank Layflat Size (m)	Tank size filled (m)	Groundsheet size (m)	Tank weight (unpacked, empty)
1,000	2.60 x 1.53	2.10 x 1.00 x 0.50	4.00 x 2.50	33kg
2,000	2.60 x 2.29	2.00 x 1.69 x 0.60	4.00 x 3.30	38kg
3,000	2.70 x 3.06	2.10 x 2.46 x 0.60	4.00 x 4.00	44kg
5,000	3.80 x 3.06	3.10 x 2.36 x 0.70	5.00 x 4.00	53kg
10,000	4.00 x 4.59	3.00 x 3.59 x 1.00	5.00 x 5.50	70kg
15,000	5.00 x 4.59	3.90 x 3.49 x 1.10	6.00 x 5.50	82kg
20,000	5.20 x 5.35	4.00 x 4.15 x 1.20	6.00 x 6.50	99kg
30,000	7.20 x 5.35	5.90 x 4.05 x 1.30	8.50 x 6.50	129kg
40,000	7.20 x 6.55	5.90 x 5.25 x 1.30	8.50 x 7.50	155kg
50,000	9.00 x 6.12	7.50 x 4.62 x 1.50	10.00 x 7.00	212kg
60,000	8.30 x 8.00	6.80 x 6.50 x 1.50	10.00 x 9.00	240kg
75,000	9.50 x 8.36	8.00 x 6.86 x 1.50	10.50 x 10.00	284kg
100,000	12.20 x 8.36	10.70 x 6.86 x 1.50	13.50 x 10.00	361kg
125,000	14.85 x 8.36	13.35 x 6.86 x 1.50	16.00 x 10.00	436kg
150,000	15.90 x 9.12	14.40 x 7.62 x 1.50	18.00 x 10.00	507kg



BUTYL PRODUCTS LIMITED

11 Radford Crescent, Billericay, Essex, CM12 0DW, England
 Telephone: +44 (0)1277 653 281 Fax: +44 (0)1277 657 921
 Email: enquiries@butylproducts.co.uk
 Website: www.butylproducts.co.uk Skype: butyl.office