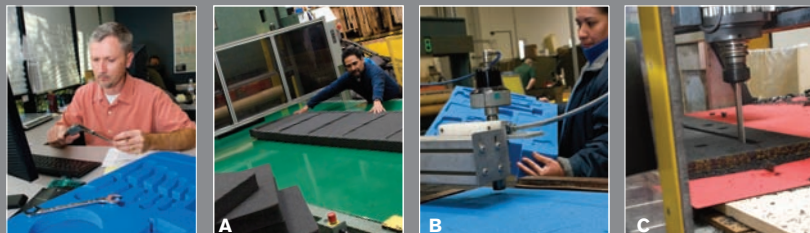


## > CUSTOM TOOL CONTROL

Need to keep track of your tools? Foam tool organizers will make your life easier. Color contrast design tells you in a quick glance if any tools are missing. Eliminate FOD (Foreign Object Damage) caused by tools left in aircraft engines or other equipment. Available as single or multi-layer foam set with compartments.



Engineers plan your foam layout for the perfect fit.

Your layout is then transferred to your choice of foam to be cut using either (A) Die Cut Technology, (B) Water Jet Technology or (C) CNC Router Technology.

## > 0450 MOBILE TOOL CHEST SPECIFICATIONS

INTERIOR DIMENSIONS (L X W X D)	EXTERIOR DIMENSIONS (L X W X D)
20.56" x 10.97" x 12.65" (52.2 x 27.9 x 32.1 cm)	23.95" x 14.75" x 17.95" (60.8 x 37.5 x 45.6 cm)
WEIGHT WITHOUT DRAWERS	WEIGHT WITH DRAWERS
33 lbs. (14.97 kg)	41.5 lbs. (18.82 kg)
COLOR	CERTIFICATES
■	MIL-STD-810F

Call Pelican for information on custom solutions for the 0450 Mobile Tool Chest.

## PELICAN LEGENDARY LIFETIME GUARANTEE OF EXCELLENCE

Pelican Products, Inc. guarantees its products for a lifetime against breakage or defects in workmanship. Pelican™ injection molded cases are guaranteed to be watertight to a depth of 3.3 feet (1 meter) for 30 minutes (IP 67) unless otherwise stated if properly closed with undamaged o-ring in place. Pelican's liability is limited to the case and not its contents or foam. This guarantee does not cover the lamp or batteries (rechargeable or alkaline) for lights. Any liability, either expressed or implied, is limited to replacement of the product. This guarantee is void if the Pelican product has been abused beyond normal and sensible wear and tear. This guarantee does not cover shark bite, bear attack or damage caused by children under five.

Guarantee does not cover Roto molded products. Refer to [www.pelican.com/warranty](http://www.pelican.com/warranty) for full details.

### U.S.A.

#### TO ORDER PELICAN LIGHTS AND CASES IN THE USA:

**TORRANCE**  
23215 Early Avenue  
Torrance, CA 90505 USA  
Tel 310.326.4700  
800.473.5422  
Fax 310.326.3311  
[www.pelican.com](http://www.pelican.com)

**DEERFIELD**  
147 North Main Street  
South Deerfield, MA 01373  
Tel: 800.542.7344  
Fax: 413.665.8330  
[www.pelican.com](http://www.pelican.com)

**INDIANA**  
3802 N 600 W # B  
Greenfield, IN 46140-9642  
Tel: 317.866.2040  
[www.pelican.com](http://www.pelican.com)

### INTERNATIONAL

**CANADA**  
Pelican Products, Inc.  
10221-184th Street  
Edmonton, Alberta  
T5S 2J4 Canada  
Tel 780.481.6076  
Fax 780.481.9586  
[www.pelican.ca](http://www.pelican.ca)

**EUROPE, MIDDLE EAST & AFRICA**  
Peli Products, S.L.  
c/ Casp, 33-B Pral.  
08010 • Barcelona, Spain  
Tel +34 934 674 999  
Fax +34 934 877 393  
[www.peli.com](http://www.peli.com)

**JAPAN**  
Pelican Products K.K.  
Suntec Bldg. 7F  
2-2-7 Honcho, Funabashi-shi  
Chiba 273-0005 Japan  
Tel +81 47.433.7715  
Fax +81 47.433.7882  
[www.pelican.com/jp](http://www.pelican.com/jp)

**AUSTRALIA**  
Pelican Products Pty Ltd  
Suite 2.33, Platinum West  
4 Ilya Avenue, Erina NSW 2260  
Australia  
Tel: +612 4367 7022  
Fax: +612 4367 7066  
[www.pelican.com](http://www.pelican.com)

**CHINA**  
Pelican Products China Representative Office  
Pine City Building, Room 1026  
777 Zhaoyiabang Road  
Shanghai, China 200032  
Tel +86.21.64189685  
Fax +86.21.64189679  
[www.pelican.com/cn](http://www.pelican.com/cn)



# RUGGED MOBILE MAINTENANCE

## > INTRODUCING THE 0450 MOBILE TOOL CHEST



©2009 Pelican Products, Inc. All trademarks and logos displayed herein are registered and unregistered trademarks of Pelican Products, Inc. and others.

Part No. 0030-000-800 AU.09



# > 0450 MOBILE TOOL CHEST

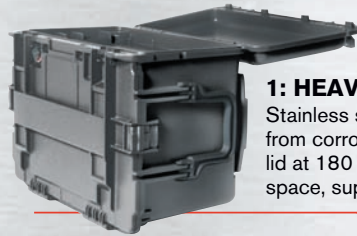
The U.S. Army tasked Pelican with building a mobile tool chest to house tools for its maintenance engineers. Rapid deployment to harsh environments is common; arriving with your tools intact and fully functional is mission critical.

Over a two year period of intensive design, research and testing, Pelican Products built the world's toughest mobile

tool chest for use by the U.S. Armed Services. Over 70 tests were required, including water submersion, extreme temperature tests and drop tests from five feet fully loaded. The 0450 passed all of them.

The 0450 Mobile Tool Chest: now ready for civilian use.

Every 0450 Mobile Tool Chest is backed by our:  
**PELICAN LEGENDARY LIFETIME  
GUARANTEE OF EXCELLENCE.**



**1: HEAVY DUTY BUTTRESS HINGES**  
Stainless steel hinge pins provide extra protection from corrosion. Raised ribs are designed to stop the lid at 180 degrees when opened to serve as a work space, supporting up to 50 lbs.

## 2: AUTO PRESSURE EQ VALVES

The 0450 has two built-in Automatic Pressure Equalization Valves: one for the top lid and the second for the main compartment. They make opening the case easier after altitude changes by balancing the interior pressure with the ambient pressure.



**3: TWO WAY HANDLES**  
The 0450 case can be lifted from the tool chest position or the transport position.

## 4: STABLE, WIDE RACK MOBILITY

The 0450 has 2" polyurethane wheels for optimum load distribution over soft terrain. By locating them on the back of the chest, they offer a wide, stable track. This also leaves the front of the chest clear of wheel obstructions, creating more usable drawer space.



**5: REMOVABLE DRAWERS**  
The 0450 Mobile Tool Chest is available with removable shallow and deep drawers constructed of the same indestructible material as the case.

**6: HYBRID DOUBLE THROW BUTTERFLY LATCHES**  
The 0450 incorporates the same robust design of Pelican's patented Double-Throw Latch but has been upgraded with a metal butterfly compression latch.



**7: GRADUATED DEFLECTOR RIBS**  
Deflector ribs protect the hinges and latches from shipping damage by diverting the energy away from the case. They are rounded off to make rolling the 0450 onto its back easy when it's ready for transport.



**8: SECURE STACK DESIGN**  
Extra deep pockets mate with the foot blocks on the bottom of the 0450 Mobile Tool Chest. This "Block-In-Pocket" design locks the cases together to prevent lateral movement.



**9: FIELD REPLACEABLE WHEELS**  
Using simple fasteners, wheels can be replaced in the field. This also assures easy cleaning should debris become lodged within the parts.

\* Foam and tools not included

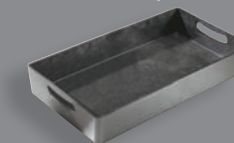
## > CONFIGURATIONS



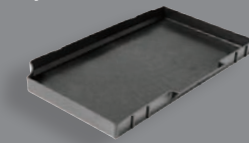
**CAT. NO. 0450WD**  
Includes 6 Shallow Drawers, 1 Deep Drawer, and 1 Top Tray.

**CAT. NO. 0450ND**  
Includes drawer glides to fit multiple combinations of deep and shallow drawers.

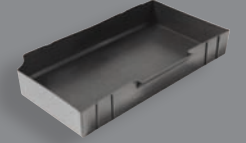
Drawers can also be purchased separately.



**CAT. NO. 0455TT**



**CAT. NO. 0455DS**

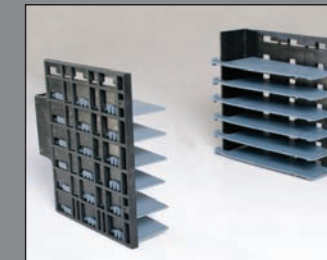


**CAT. NO. 0455DD**

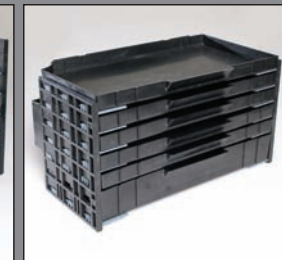
## > DRAWER ASSEMBLY

### CUSTOMIZE YOUR 0450

The modular design of the 0450 Mobile Tool Chest allows you to adjust the number and position of glides to accommodate a multitude of drawer configurations.



Adjustable glides allow for multiple drawer configurations.



Choose shallow drawers, deep drawers or mix and match

### 0450 DRAWER CONFIGURATIONS

DEEP	SHALLOW
3	2
4	0
2	4
1	6
0	8

Multiple combinations available

## > TOOL CONTROL

### TOOL PALLET SOLUTION

Pelican's versatile nylon elastic strap system fits any tool and keeps it firmly in place during transport. Tool pallets are available in vertical or horizontal configurations.



**CAT. NO. 0457**  
Horizontal tool pallet



**CAT. NO. 0456**  
Vertical tool pallet

### CUSTOM FOAM SOLUTION

Secure and protect your valuables with a customized foam solution, (see back panel for additional foam solutions).

